

Saniflo  SFA GROUP

Catalogue  
PUMPS &  
MACERATORS





# INDEX

Saniflo - history of expertise	Page 03
How does Saniflo work?	Page 05
Macerator or greywater pump?	Page 06
10 Good reasons to choose Saniflo	Page 07
10 Golden rules	Page 08
Saniflo in your home	Page 09
Saniflo in commercial spaces	Page 10
The right product for your project	Page 11

<b>SECTION 1: HALF BATHROOMS</b>	<b>PAGE 13</b>
Saniflo	Page 14
Sanitop	Page 15
Sanicompact 43	Page 16

<b>SECTION 2: FULL BATHROOMS</b>	<b>PAGE 17</b>
Sanipro XR	Page 18
Sanislim	Page 19
Sanipack	Page 20
Saniplus	Page 21
Saniaccess 3	Page 22
Sanibest Pro	Page 23

<b>SECTION 3: KITCHEN, FULL BATHROOMS</b>	<b>PAGE 24</b>
Sanishower	Page 25
Sanishower Flat	Page 26
Sanifloor	Page 27
Sanivite	Page 28
Sanispeed	Page 30
Sanicom 1	Page 31
Sanicom 2	Page 32

<b>SECTION 4: FULL HOUSE &amp; COMMERCIAL BUILDINGS</b>	<b>PAGE 33</b>
Sanicubic 1	Page 34
Sanicubic 2 Classic	Page 36
Sanicubic 2 XL	Page 38



## SECTION 5: UNDERGROUND PUMP STATIONS

PAGE 40

Sanifos 110	Page 41
Sanifos 280	Page 42
Sanifos 610	Page 43
Sanipump	Page 44

## SECTION 6: SUBMERSIBLE PUMP

PAGE 45

Sanisub ZPK	Page 46
Sanisub 400	Page 47
UFB 200/30 & 40	Page 48
Sanipump SLD 700 SA	Page 49
Sanipuddle FSP	Page 50
Sanisub steel & Emergency kit	Page 51

## SECTION 7: CONDENSATE PUMPS

PAGE 52

Sanicondens Pro	Page 53
Sanicondens Clim mini	Page 54
Sanicondens Clim pack	Page 55
Sanicondens Clim deco	Page 56

## SECTION 8: ACCESSORIES

PAGE 57

Sanialarm	Page 58
Extension Pipe	Page 58
Saniflo Isolating Valves	Page 59
Air Admittance Valve	Page 59

## SECTION 9: CASE STUDIES - SANIFLO IN USE

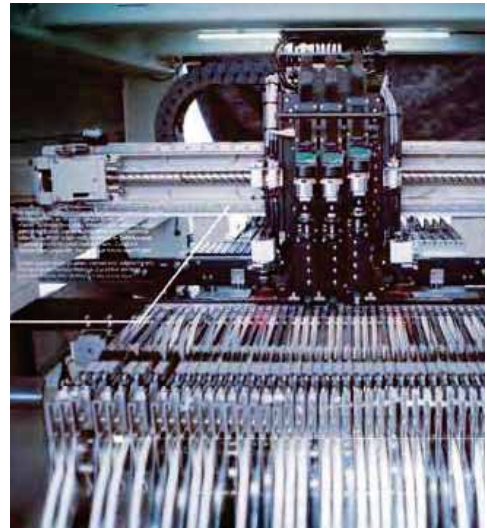
PAGE 60

Commercial	Page 60
Industrial	Page 63
Modular Construction	Page 64



## OUR FACTORY IN BRÉGY

**For over 60 years SFA has offered solutions to install a new bathroom or kitchen anywhere without undertaking major building work. Our factory, located in Brégy, France, is ISO 9001 and 14001 certified.**

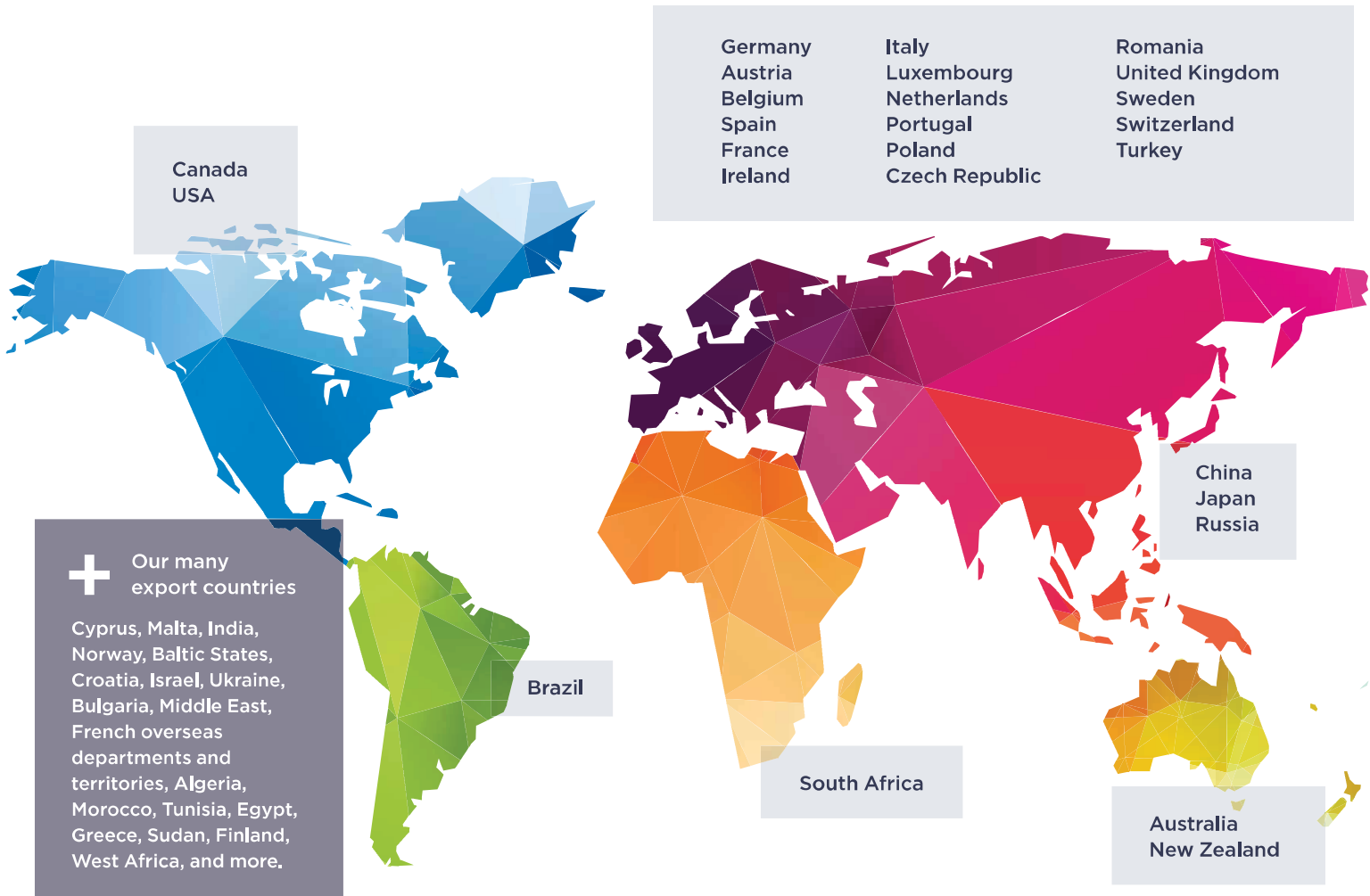


Every day, some 300 employees work to bring our company values to life, to make things easier for our customers and our installers. Over the years, numerous investments have taken Brégy from being a simple assembly site to a largely self-sufficient production centre. To guarantee product quality from start to finish, we have vertically integrated the manufacturing of many components into our own production process. Our 17000sqm factory is divided into four units to manage the production of composite and rubber parts, the manufacture of motors, the assembly of components and the creation of electronic components.

**SFA SANIFLO SOLUTIONS ARE SYNONYMOUS WITH QUALITY, DESIGN AND TECHNOLOGY.**



# AN INTERNATIONAL PRESENCE



## SOME KEY FIGURES

  
**25**  
SFA SUBSIDIARIES

  
OVER  
**70**  
SFA DISTRIBUTORS

  
**10000**  
EMPLOYEES

  
OVER  
**200**  
SFA PRODUCTS  
SOLD WORLDWIDE

# HOW DOES SANIFLO WORK?



## MACERATOR

Private use (Residential)

To 'macerate' is to soften and break into pieces. Our Saniflo macerating systems use a stainless-steel rotating blade to liquefy human waste and toilet paper. When mixed with flushing water, the waste is pumped into the sewer pipe as fine slurry.

### PRODUCTS

Saniflo / Sanitop / Sanipro XR / Sanislim / Sanipack / Sanicompact / Saniplus / SaniAccess 3



## GRINDER

Public use (Hotels, Guesthouses, Restaurants, Bars & Offices)

The grinder will mostly accept accidental flushing of sanitary items. It grinds up waste from toilets, showers, washing machines etc. and pumps it into the public sewer or septic tanks.

### PRODUCTS

Sanibest Pro / Sanicubic 1 / Sanicubic 2 Classic / Sanifos 110 / Sanipump



The toilet is flushed into the unit, the water level rises up to the sensor, and the Saniflo macerator motor turns on automatically.



The blades, driven by the motor, grind the contents into tiny particles in 3 or 4 seconds.



The finely ground particles are pumped through a standard 22 or 32 mm pipe.



The macerating tank is now empty (apart from the water seal) and the system is ready for use again.



# MACERATOR OR GREYWATER PUMP



## MACERATOR PUMPS

If you are installing a toilet, a macerator pump should be used.

A macerator is a high-speed motor with blades that break up organic waste and paper into a fine slurry, so that it can be pumped away through small-bore pipework. With a range of macerating pumps capable of accepting waste from up to five fixtures, your renovations won't rely on any major structural work as your Saniflo pumps can be installed on top of any finished floor, even if it is located below the existing sewer lines.



## GREYWATER PUMPS

If you are not installing a toilet, a greywater pump should be installed.

Greywater is produced from general domestic and office processes such as dish or glass washing, bathing and laundry. Our greywater pump range is ideal for renovating either your home or office, as each pump allows you to install additional facilities such as kitchens, laundry rooms and even shower and washing facilities anywhere you choose – even if the selected space is far from the sewer line. With the ability to pump greywater without relying on traditional gravity-fed plumbing, installing Saniflo does not entail disruptive construction, as the waste lines can be concealed in wall cavities and ceiling voids.

# 10 REASONS

## WHY SANIFLO IS THE ANSWER FOR ADDING A NEW BATHROOM, KITCHEN OR LAUNDRY ROOM



### 1. WHEN THE USE OF CONVENTIONAL GRAVITY DRAINING IS IMPOSSIBLE.

If the proposed location of the new bathroom or kitchen is too far from, or below the existing sewer pipe, (e.g. the building is located on a slope) Saniflo is the solution.



### 2. BENEFIT FROM MORE THAN 60 YEARS OF EXPERIENCE.

As the inventor, designer and manufacturer of small-bore sewage macerators and grey-water pumps, Saniflo has been at the forefront of sanitary appliances since 1958. Used world wide – including high-end establishments such as Buckingham Palace and Cape Town Parliament. For expertise, Saniflo is the solution.



### 3. TO AVOID MAJOR DISRUPTION.

To avoid a big renovation or having to break up and then replace your tiles, or if you can't break a shared wall, Saniflo is the solution.



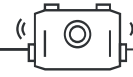
### 4. ADD VALUE AND COMFORT TO YOUR HOUSE.

Research has shown that an extra bathroom can add about 10% to the value of your house. To achieve that, together with the benefit of having an extra bathroom, Saniflo is the solution.



### 5. DON'T MOVE, IMPROVE!

If you want to avoid moving to a new house to gain an extra bathroom, an upgraded kitchen or a new laundry room, Saniflo is the solution.



### 6. QUIETER BY DESIGN.

All motors are fitted onto resilient mounts that absorb the resonant vibrations when the equipment is operating, making it quieter. For a quiet subtle product, Saniflo is the solution.



### 7. QUALITY.

Saniflo products are made in France and comply to all European and International standards (EN 12050-3, EN 12050-2 and EN 12050-1). Our manufacturing facility is quality certified to ISO 14001, and all Saniflo pumps carry a 2-year warranty. If you need quality products, Saniflo is the solution.



### 8. TO SAVE COSTS.

If you want to avoid the expense of a major renovation, Saniflo is the solution.



### 9. EASE OF MAINTENANCE.

A Saniflo unit is almost maintenance-free, apart from descaling (of which the frequency depends on water hardness levels). For a low maintenance product, Saniflo is the solution.



### 10. PEACE OF MIND.

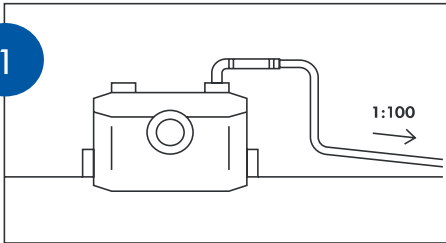
Through our network of dealers and preferred installers, Saniflo provides after-sales service in all countries where our products are sold. For peace of mind, Saniflo is the solution.



# 10 GOLDEN RULES

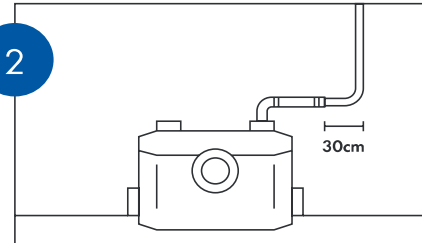
## FOR CORRECT SANIFLO INSTALLATION

**1**



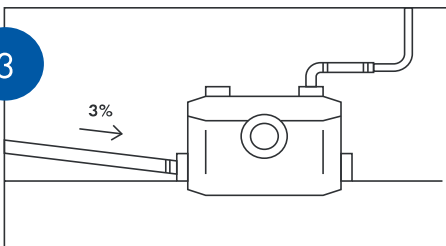
All horizontal pipes should have a minimum fall of 1:100. Discharge pipework should be copper or rigid solvent weld plastic, not 'push-fit'.

**2**



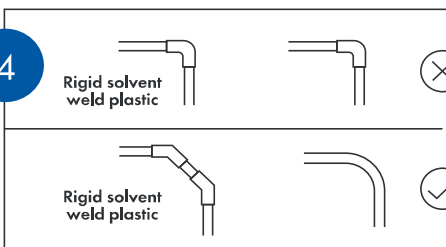
If a vertical run is needed, this should be at the start of the run (within 30cm of the unit) and from the high point there must be a minimum fall of 1:100 (see rule 1).

**3**



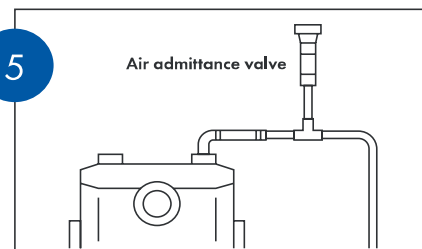
Pipes entering the Saniflo should have a gravity fall of 1:33.

**4**



Bends should be smooth/long radius, not tight elbows. All pipework should be supported according to pipe manufacturers recommendations.

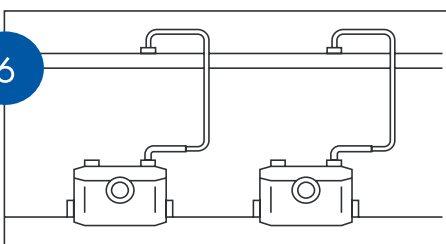
**5**



Air admittance valve

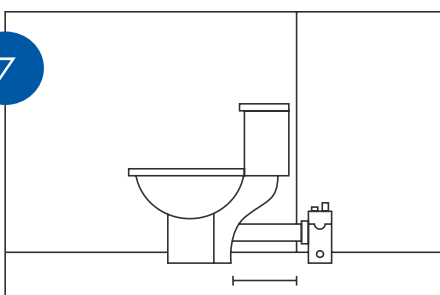
Where the pipework falls to a floor lower for example, fit an air admittance valve at the highest point, capable of withstanding 10psi pressure, or increase pipe size coming down to 'break' syphon.

**6**



Each Saniflo discharge pipe should run separately to the soil pipe. If wastes are combined, it can only be into a larger pipe, which is on a gravity fall.

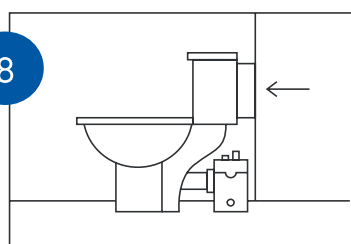
**7**



450mm

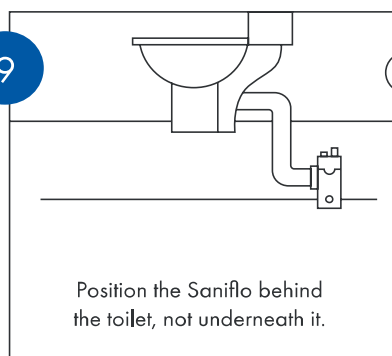
The unit should be easily accessible and removable in the event of maintenance being required. If boxed in, the boxing should be easily removable. Any extension between the toilet pan spigot and wall should not exceed 450mm.

**8**



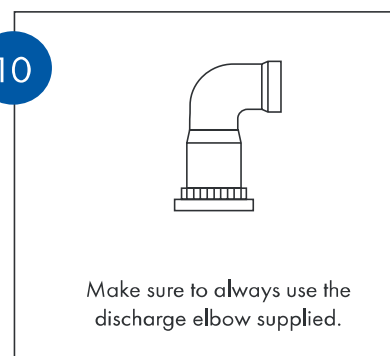
Since many close coupled toilet suites do not have the space between the toilet pan spigot and the wall, you may have to batten the cistern off the wall to make room for the Saniflo. However, Sanislim will fit behind most closed coupled toilet suites without the need for this.

**9**



Position the Saniflo behind the toilet, not underneath it.

**10**



Make sure to always use the discharge elbow supplied.

# SANIFLO IN YOUR HOME

## MAIN BATHROOM

Need to pump bath water waste?  
Possible with a Sanivite. See page 30.

## LOFT CONVERSION BATHROOM

Need an additional bathroom? Try a Sanislim.  
See page 20

## BEDROOM/EN SUITE

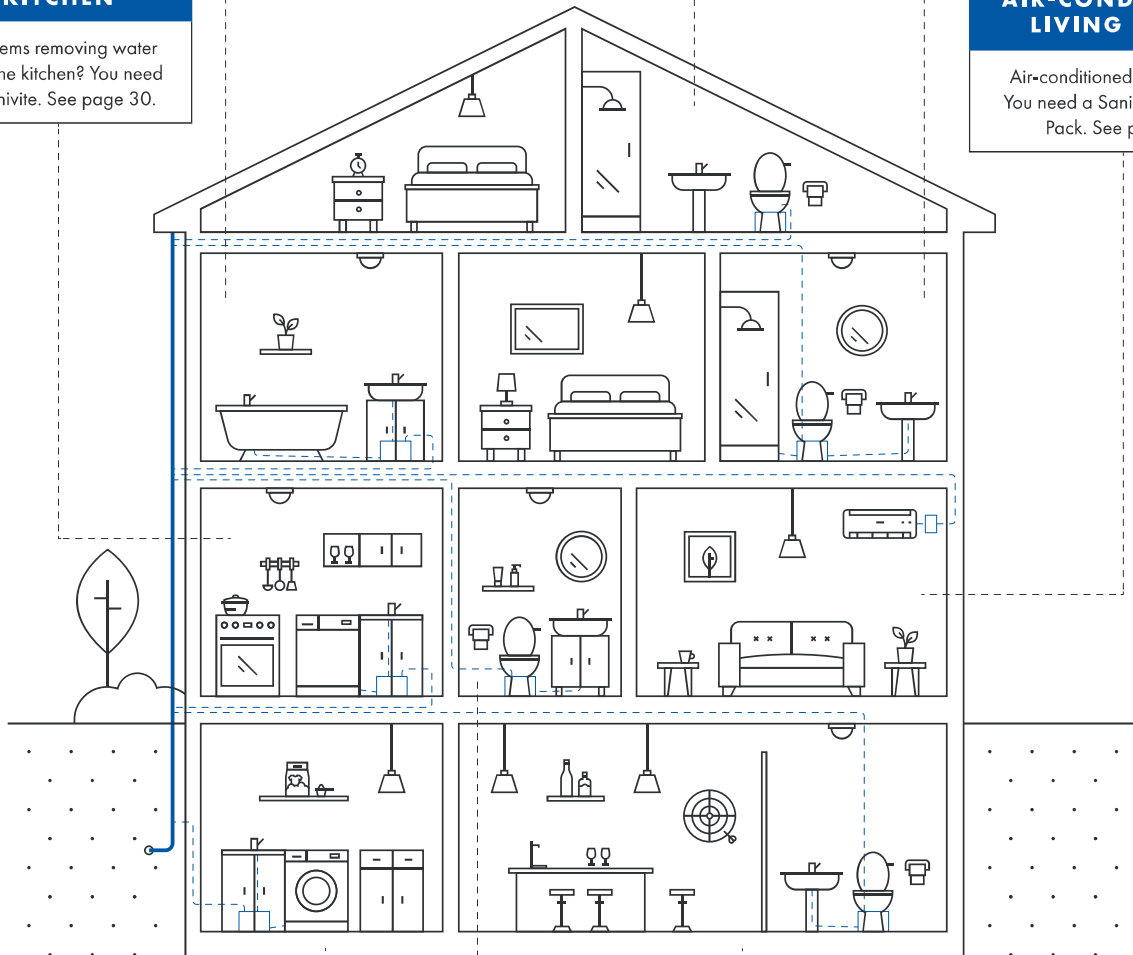
Add an en suite to any bedroom.  
Possible with a Sanipro XR. See page 19.

## KITCHEN

Problems removing water from the kitchen? You need a Sanivite. See page 30.

## AIR-CONDITIONED LIVING ROOM

Air-conditioned living room?  
You need a Sanicondens Clim Pack. See page 51.



## BASEMENT UTILITY ROOM

Creating a new utility room?  
Try a Sanivite. See page 30.

## GUEST LOO

Not enough room to install a guest loo?  
Possible with a Sanicompact 43. See page 17.

## GARAGE CONVERSION

Add a bar with a basin and toilet to your newly converted Mancave. Use a Sanitop.  
See page 16.

Conventional plumbing uses gravity to allow drainage to conveniently situated pipework or sewers. But what if gravity is not available? What if drainage pipework is not accessible, for example a loft or basement? Saniflo works where convention doesn't. The domestic range consists of 22 solutions for bathrooms and kitchens.



# SANIFLO IN COMMERCIAL SPACES

## OFFICES

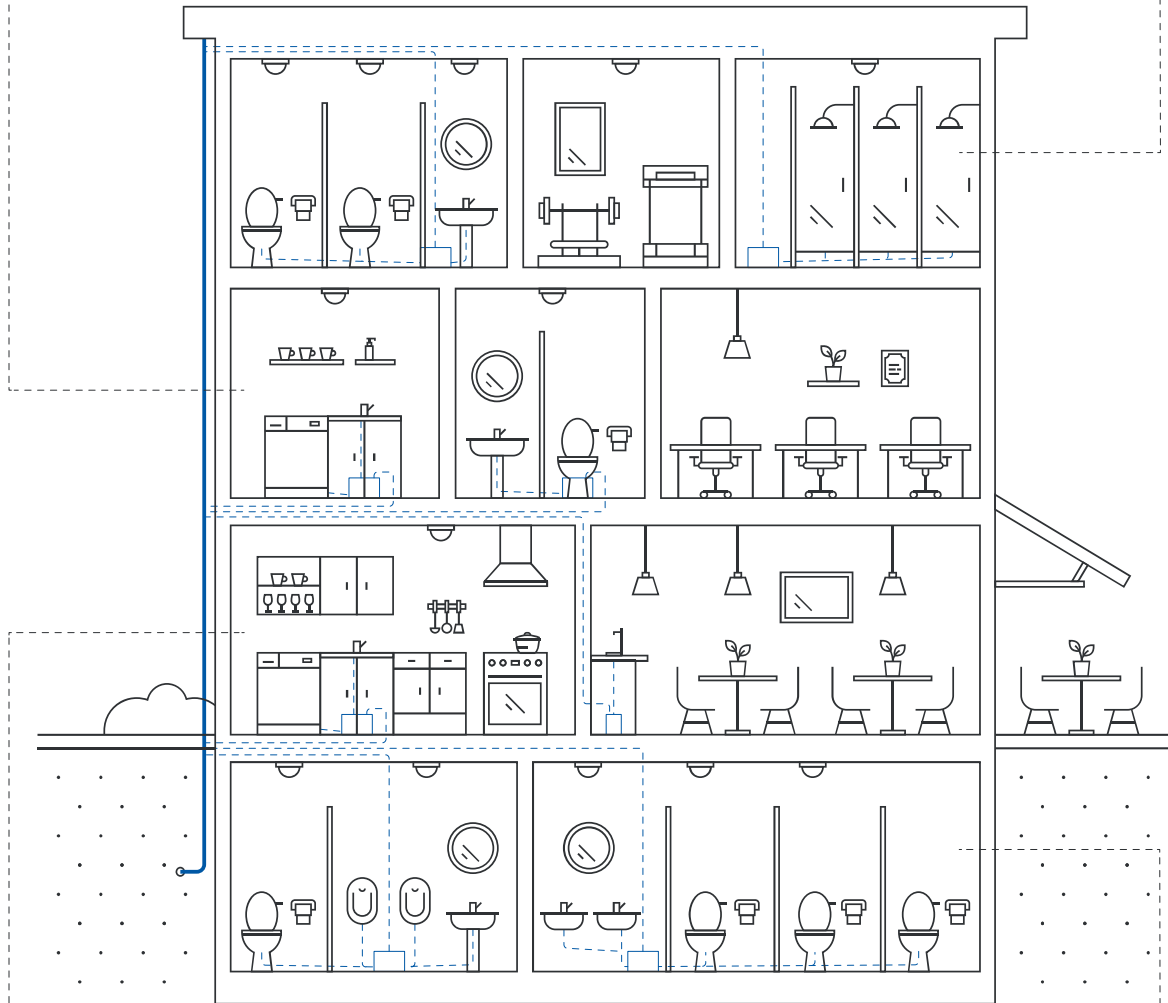
Need extra kitchen facilities for the employees?  
Made possible with the Sanivite. See page 30.

Office coffee machine getting used frequently?  
The Sanispeed can handle the volume and heat. See page 31.

## GYM

Need to install multiple showers? A Sanicomb 1  
will do the job. See page 32.

Public toilets for the gym? Try a Sanicubic 2  
Classic. See page 37.



## CAFÉ & BAR

Busy Café? Get a Sanicom 1 for the glass washer.  
See page 32.

Kitchen water waste from the café?  
Try a Sanispeed. See page 31.

## PUBLIC TOILETS

Ensure public toilets never let you down.  
Use a Sanicubic 2 XL. See page 39.

Tough conditions require tough products and the Saniflo commercial range now has 14 products that are robust enough to perform in some of the most demanding situations. Having manufactured Saniflo products for over 60 years, no other manufacturer has the years of experience and expertise to produce such a comprehensive range of units for commercial applications.

# THE RIGHT PRODUCT FOR YOUR PROJECT



*\*Image shown with exposed pipes for illustrative purposes only*

## EXAMPLES OF SITUATIONS IN WHICH OUR PRODUCTS CAN BE INSTALLED

House / Loft or attic / Upper floor / Ground floor / Basement / Garage / Cabin / Pool house / Restaurant or bar / Mining camp / Warehouse / Office / Shopping complex

See page 66 for many more examples

**SANIFLO**

**SANITOP**

**SANICOMPACT 43**

**SANIPRO XR**

**SANISLIM**

**SANIPACK**

**SANIPLUS**

**SANIAACCESS 3**

**SANIBEST PRO**

**SANISHOWER**

**SANISHOWER FLAT**

**SANIFLOOR**

**SANIVITE**

**SANISPEED**

**SANICOM 1**

**SANICOM 2**

**SANICUBIC 1**

**SANICUBIC 2 CLASSIC**

**SANICUBIC 2 XL**

**SANIFOS 110**

**SANIFOS 280**

**SANIFOS 610**

**SANIPUMP**

**SANISUB ZPK**

**SANISUB 400**

**UFB 200/30**

**SANISUB SLD 700**

**SANIPUDDLE FSP**

**SANISUB STEEL & EMERGENCY KIT**

**SANICONDENS PRO**

**SANICONDENS CLIM MINI**

**SANICONDENS CLIM PACK**

**SANICONDENS CLIM DECO**



Toilet



Wall-hung Toilet



Basin





### 1. HALF BATHROOMS

Page	Toilet	Bidet	Sink	Shower	Bath	Dishwasher	Washing Machine	Air Conditioning Unit	Condensing Boiler	Refrigeration Unit	DISTANCE UP	DISTANCE LONG	PIPE SIZE	MAXIMUM TEMPERATURE
Page 14	•										4m	100m	22-40mm	35° C
Page 15	•		•								5m	100m	22-40mm	35° C
Page 16	•		•								3m	30m	32-40mm	35° C

### 2. FULL BATHROOMS

Page	Toilet	Bidet	Sink	Shower	Bath	Dishwasher	Washing Machine	Air Conditioning Unit	Condensing Boiler	Refrigeration Unit	DISTANCE UP	DISTANCE LONG	PIPE SIZE	MAXIMUM TEMPERATURE
Page 18	•		•	•	•						5m	100m	22-40mm	35° C
Page 19	•		•	•	•						2.5m	40m	22-40mm	35° C
Page 20		•	•	•	•						5m	100m	22-40mm	35° C
Page 21	•		•	•	•	•					5m	100m	22-40mm	35° C
Page 22	•		•	•	•						5m	100m	22-40mm	35° C
Page 23	•		•	•	•						7m	110m	22-40mm	35° C

### 3. KITCHEN, LAUNDRY & EN SUITE

Page	Toilet	Bidet	Sink	Shower	Bath	Dishwasher	Washing Machine	Air Conditioning Unit	Condensing Boiler	Refrigeration Unit	DISTANCE UP	DISTANCE LONG	PIPE SIZE	MAXIMUM TEMPERATURE
Page 25			•	•	•						4m	40m	32mm	35° C
Page 26			•		•						3m	30m	32mm	35° C
Page 27					•						3m	30m	32mm	35° C
Page 28			•	•	•	•	•	•			5m	50m	32-40mm	60° C
Page 30			•	•	•	•	•	•			7m	70m	32-40mm	75° C
Page 31			•	•	•	•	•	•			8m	80m	32mm	90° C
Page 32			•	•	•	•	•	•			8m	80m	50mm	90° C

### 4. FULL HOUSE & COMMERCIAL BUILDINGS

Page	Toilet	Bidet	Sink	Shower	Bath	Dishwasher	Washing Machine	Air Conditioning Unit	Condensing Boiler	Refrigeration Unit	DISTANCE UP	DISTANCE LONG	PIPE SIZE	MAXIMUM TEMPERATURE
Page 34	•	•	•	•	•	•	•	•			11m	110m		70° C
Page 36	•	•	•	•	•	•	•	•			11m	110m	50mm	70° C
Page 38	•	•	•	•	•	•	•	•			10m	100m	80mm	70° C

### 5. UNDERGROUND PUMP STATIONS

Page	Toilet	Bidet	Sink	Shower	Bath	Dishwasher	Washing Machine	Air Conditioning Unit	Condensing Boiler	Refrigeration Unit	DISTANCE UP	DISTANCE LONG	PIPE SIZE	MAXIMUM TEMPERATURE
Page 41	•	•	•	•	•	•	•	•			11m	110m	40mm	70° C
Page 42	•	•	•	•	•	•	•	•			11m	110m	50mm	70° C
Page 43	•	•	•	•	•	•	•	•			12m	120m	50mm	70° C
Page 44	•	•	•	•	•	•	•	•			11m	110m	40mm	70° C

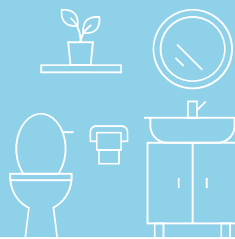
### 6. SUBMERSIBLE PUMPS

Page	Toilet	Bidet	Sink	Shower	Bath	Dishwasher	Washing Machine	Air Conditioning Unit	Condensing Boiler	Refrigeration Unit	DISTANCE UP	DISTANCE LONG	PIPE SIZE	MAXIMUM TEMPERATURE
Page 46											10m	-	32mm	90° C
Page 47											7.5m	-	32mm	-
Page 48											7.5m	-	32mm	-
Page 49											14m	-	40mm	-
Page 50											7m	-	25mm	-
Page 51											7.5m	-	32mm	80° C

### 7. CONDENSATE PUMPS

Page	Toilet	Bidet	Sink	Shower	Bath	Dishwasher	Washing Machine	Air Conditioning Unit	Condensing Boiler	Refrigeration Unit	DISTANCE UP	DISTANCE LONG	PIPE SIZE	MAXIMUM TEMPERATURE
Page 53											4.5m	50m	8mm	80° C
Page 54											6m	60m	10mm	35° C
Page 55											6m	60m	10mm	35° C
Page 56											6m	60m	6mm	35° C





## HALF BATHROOMS



**SANIFLO**



**SANITOP**



**SANICOMPACT 43**

## IDEAL FOR: The installation of a toilet

The original macerator pump unit that allows the installation of a toilet where gravity drainage would not be possible.

**Size:** L 330mm x H 263mm x W 163mm

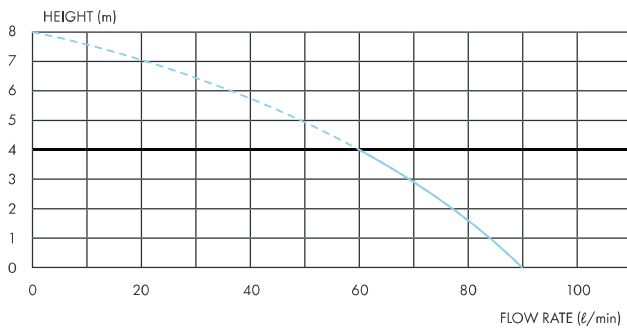
**Weight:** 5.7kg

**Discharge pipe diameter:** 22mm to 40mm

**Power/Electrical Information:** 220–240V / 50Hz / 400W, 2.3A/ IP44

**Normal operating temperature:** 35 °C

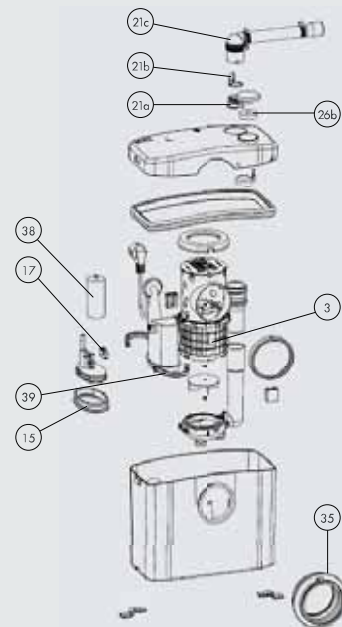
Can be equipped with SANIALARM®



↑ 4m → 100m



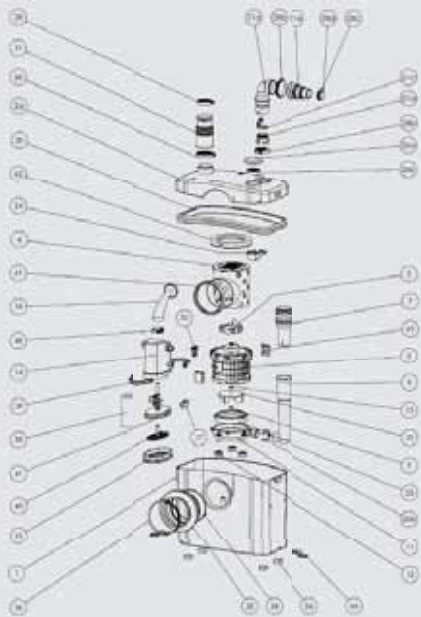
- A. 22-40mm elbow discharge with equipped NR valve
- B. Vent/carbon filter
- C. Connect to toilet







- A. 22-40mm elbow discharge with equipped NR valve
- B. Vent/carbon filter
- C. Connect to toilet
- D. Connect to wash basin



**IDEAL FOR:** The installation of a half bathroom

The Sanitop allows the connection of a toilet and a wash basin to one macerator pump.

**Size:** L 330mm x H 263mm x W 163mm

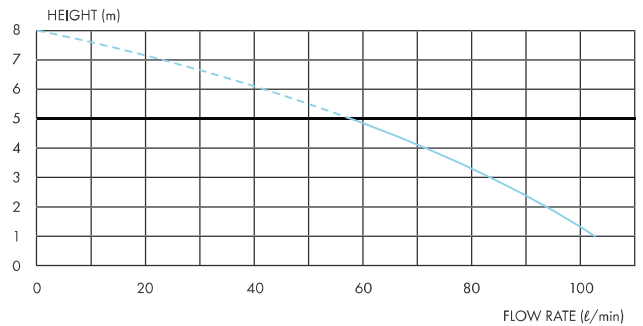
**Weight:** 5.8kg

**Discharge pipe diameter:** 22mm to 40mm

**Power/Electrical Information:** 220–240V / 50Hz / 400W, 2.3A / IP44

**Normal operating temperature:** 35°C

Can be equipped with SANIALARM®



↑ 5m → 100m



# SANICOMPACT® 43

**IDEAL FOR:** The installation of a compact, cisternless, water-saving toilet.

The Sanicompact flushes directly from the water supply. This type of flushing also uses much less water than conventional flushing. It also has an inlet for a wash basin.

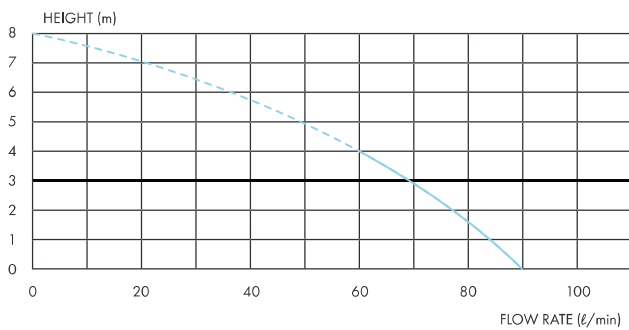
**Size:** L 390mm x H 445mm x W 430mm

**Weight:** 23kg

**Discharge pipe diameter:** 32–40mm

**Power/Electrical Information:** 220–240V / 50Hz / 550W  
2.5A / IP44

**Normal operating temperature:** 35 °C

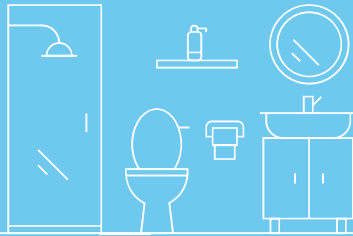


↑ 3m → 30m



- A. 32-40mm elbow discharge with equipped NR valve
- B. Connect to wash basin





## FULL BATHROOMS



**SANIPRO XR**



**SANISLIM**



**SANIPACK**



**SANIPLUS**



**SANIACCESS 3**



**SANIBEST Pro**



**IDEAL FOR:** The installation of a full bathroom.

The Sanipro XR macerator pump is capable of processing waste water from a full bathroom.

**Size:** L 413mm x H 263mm x W 180mm

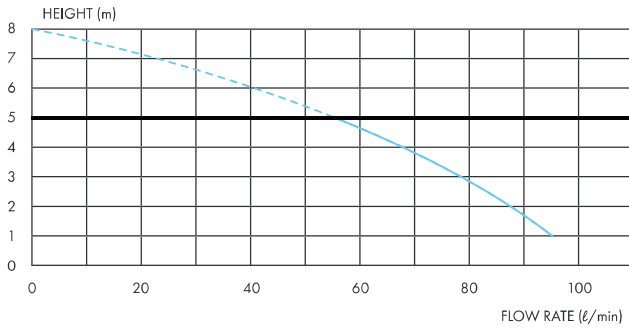
**Weight:** 7.2kg

**Discharge pipe diameter:** 22–40mm

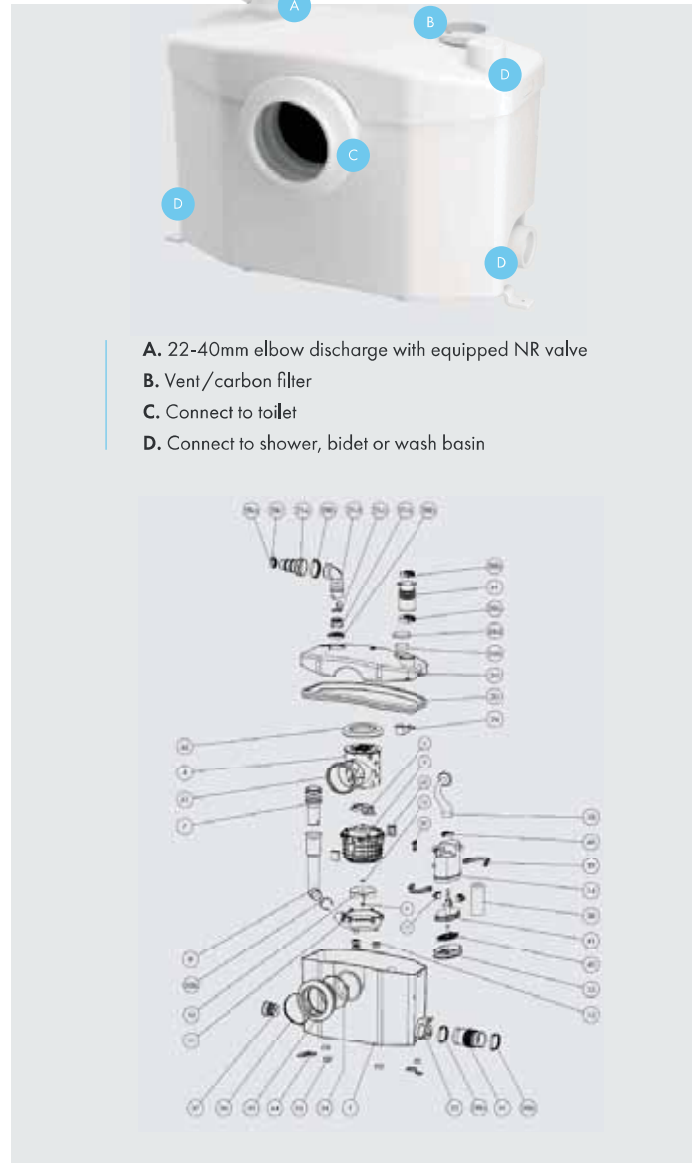
**Power/Electrical Information:** 220–240V / 50Hz / 400W  
2.3A / IP44

**Normal operating temperature:** 35 °C

Can be equipped with SANIALARM®



↑ 5m → 100m



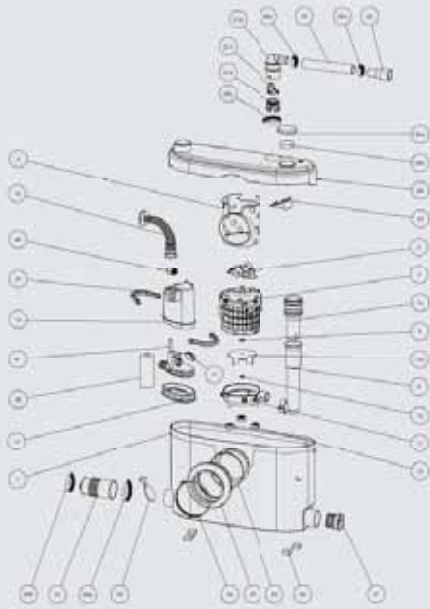
- A. 22-40mm elbow discharge with equipped NR valve
- B. Vent / carbon filter
- C. Connect to toilet
- D. Connect to shower, bidet or wash basin



\*Image shown with exposed pipes for illustrative purposes only



- A. 22-40mm elbow discharge with equipped NR valve
- B. Venti/carbon filter
- C. Connect to toilet
- D. Connect to shower, bidet or wash basin



## IDEAL FOR: The installation of a full bathroom

The Sanislim accommodates a full bathroom, and the slimline design takes up less space to fit behind most closed-coupled toilet suites.

**Size:** L 447mm x H 270mm x W 131 mm

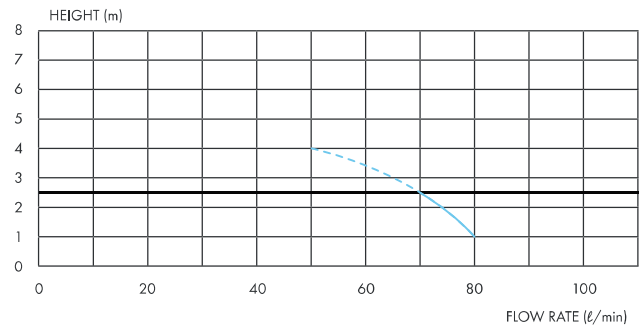
**Weight:** 5.8kg

**Discharge pipe diameter:** 22mm to 40mm

**Power/Electrical Information:** 220–240V / 50Hz / 400W  
2.3A/ IP44

**Normal operating temperature:** 35 °C

Can be equipped with SANIALARM®



↑ 2.5m → 40m



## IDEAL FOR: The installation of a full bathroom

The Sanipack allows for a stylish full bathroom with a wall-hung toilet.

**Size:** L 462mm x H 295mm x W 146mm

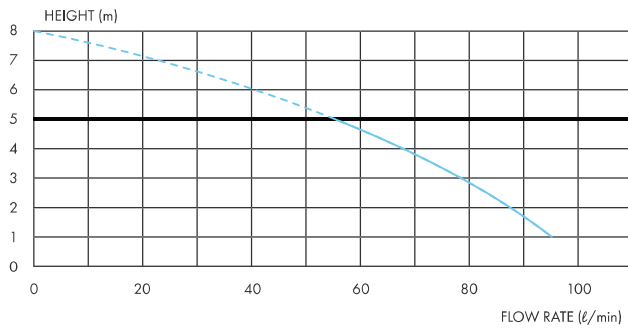
**Weight:** 7kg

**Discharge pipe diameter:** 22–40mm

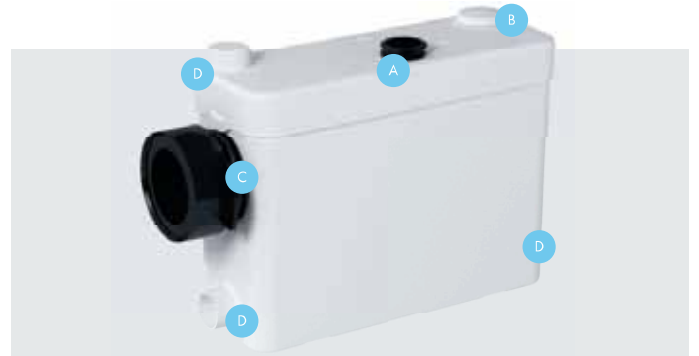
**Power/Electrical Information:** 220–240V / 50Hz / 400W  
2.3A / IP44

**Normal operating temperature:** 35 °C

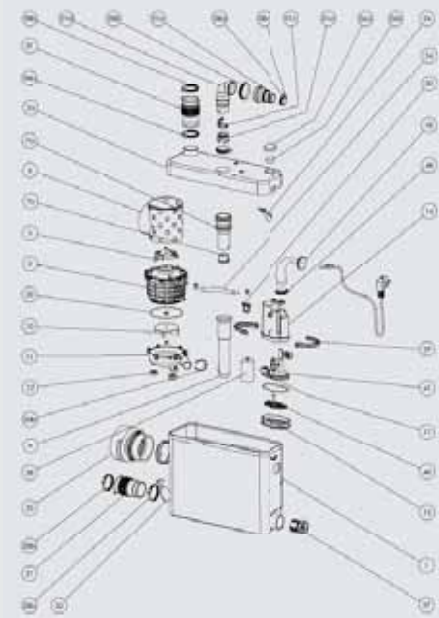
Can be equipped with SANIALARM®



↑ 5m → 100m

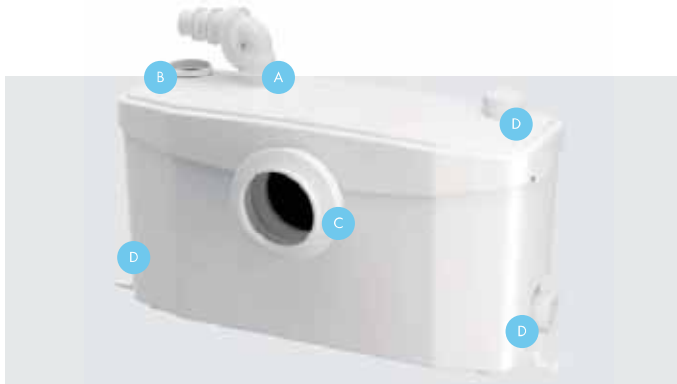


- A. 22-40mm elbow discharge with equipped NR valve
- B. Vent/carbon filter
- C. Connect to wall-hung toilet
- D. Connect to shower, bidet or wash basin

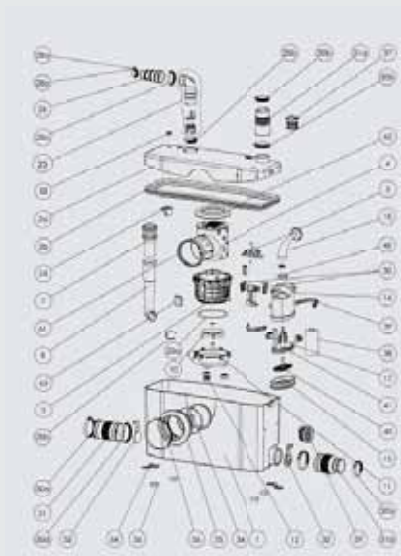


\*Image shown with exposed pipes for illustrative purposes only





- A. 22-40mm elbow discharge with equipped NR valve
- B. Vent/carbon filter
- C. Connect to toilet
- D. Connect to shower, bidet or wash basin



**IDEAL FOR:** The installation of a full bathroom with a bath

The Saniplus is capable of handling waste water from a full bathroom, including a bath.

**Size:** L 512mm x H 270mm x W 181 mm

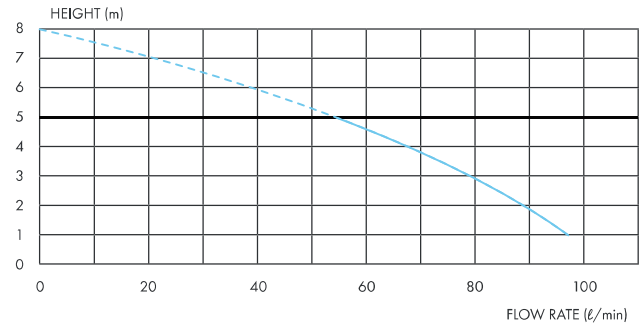
**Weight:** 7.8kg

**Discharge pipe diameter:** 22mm to 40mm

**Power/Electrical Information:** 220–240V / 50Hz / 400W  
2.3A / IP44

**Normal operating temperature:** 35 °C

Can be equipped with SANIALARM®



↑ 5m → 100m



\*Image shown with exposed pipes for illustrative purposes only

**IDEAL FOR:** The installation of an en-suite bathroom

The Saniaccess 3 is designed for areas where maintenance is required due to possible misuse. It's "easy to access" components make this possible.

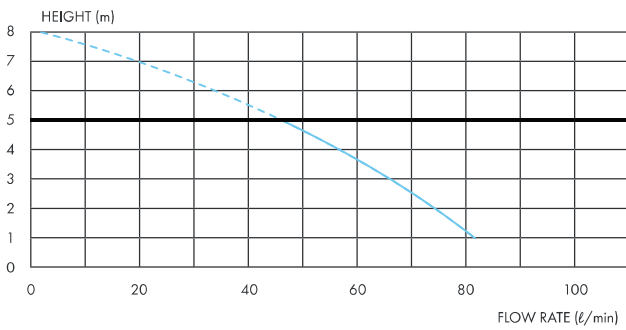
**Size:** L 462mm x H 295mm x W 168mm

**Weight:** 7kg

**Discharge pipe diameter:** 22–40mm

**Power/Electrical Information:** 220–240V / 50Hz / 400W  
2.3A / IP44

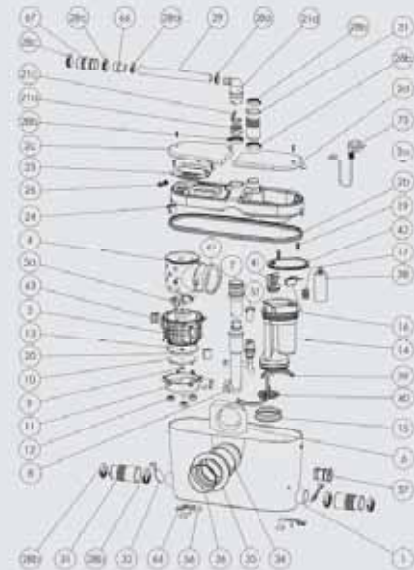
**Normal operating temperature:** 35 °C



↑ 5m → 100m

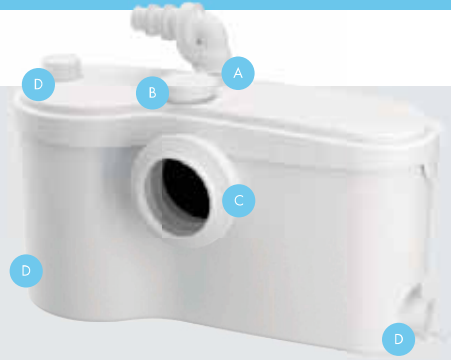


- A. 22-40mm elbow discharge with equipped NR valve
- B. Connect to toilet
- C. Connect to shower or sink

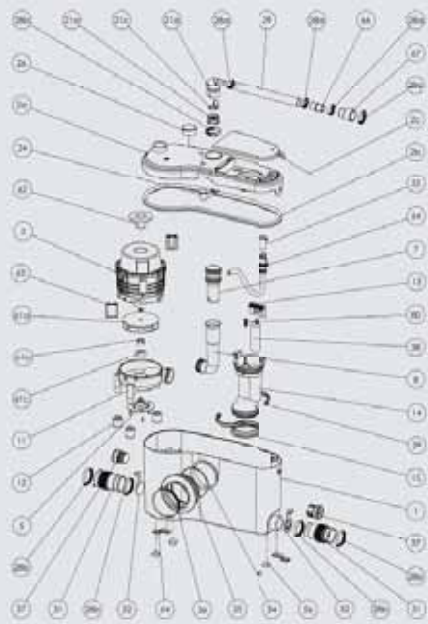


\* Image shown with exposed pipes for illustrative purposes only

# SANIBEST<sup>®</sup> Pro



- A. 22-40mm elbow discharge with equipped NR valve
- B. Vent/carbon filter
- C. Connect to toilet
- D. Connect to shower or wash basin



**IDEAL FOR:** The installation of a full bathroom

The Sanibest Pro is designed for demanding applications whether it be public spaces or long-distance pumping requirements.

**Size:** L 507mm x H 267,5mm x W 154mm

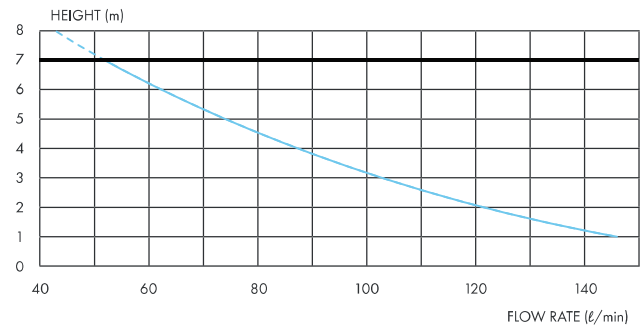
**Weight:** 11kg

**Discharge pipe diameter:** 22mm to 40mm

**Power/Electrical Information:** 220-240V / 50Hz / 1 100W  
5A / IP44

**Normal operating temperature:** 35 °C

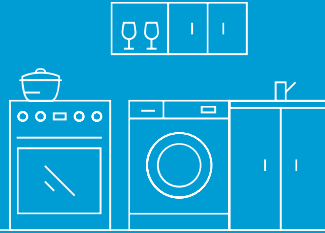
Can be equipped with SANIALARM<sup>®</sup>



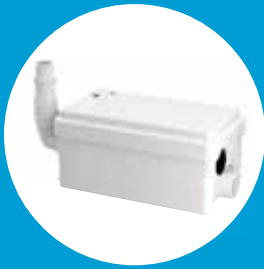
↑ 7m → 110m



\*Image shown with exposed pipes for illustrative purposes only



# KITCHEN, LAUNDRY & EN SUITE



**SANISHOWER**



**SANISHOWER FLAT**



**SANIFLOOR**



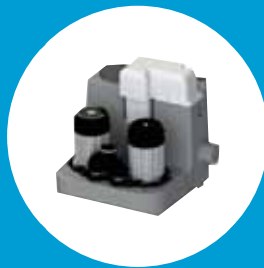
**SANIVITE**



**SANISPEED**



**SANICOM 1**



**SANICOM 2**



## IDEAL FOR: The installation of a shower

The Sanishower allows the addition of a shower and basin, or a kitchenette with a sink only.

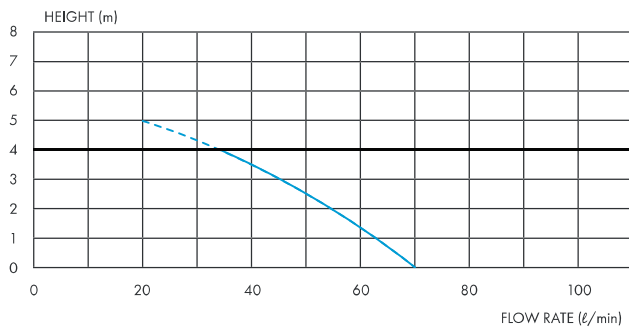
**Size:** L 296mm x H 145mm x W 165mm

**Weight:** 3.5kg

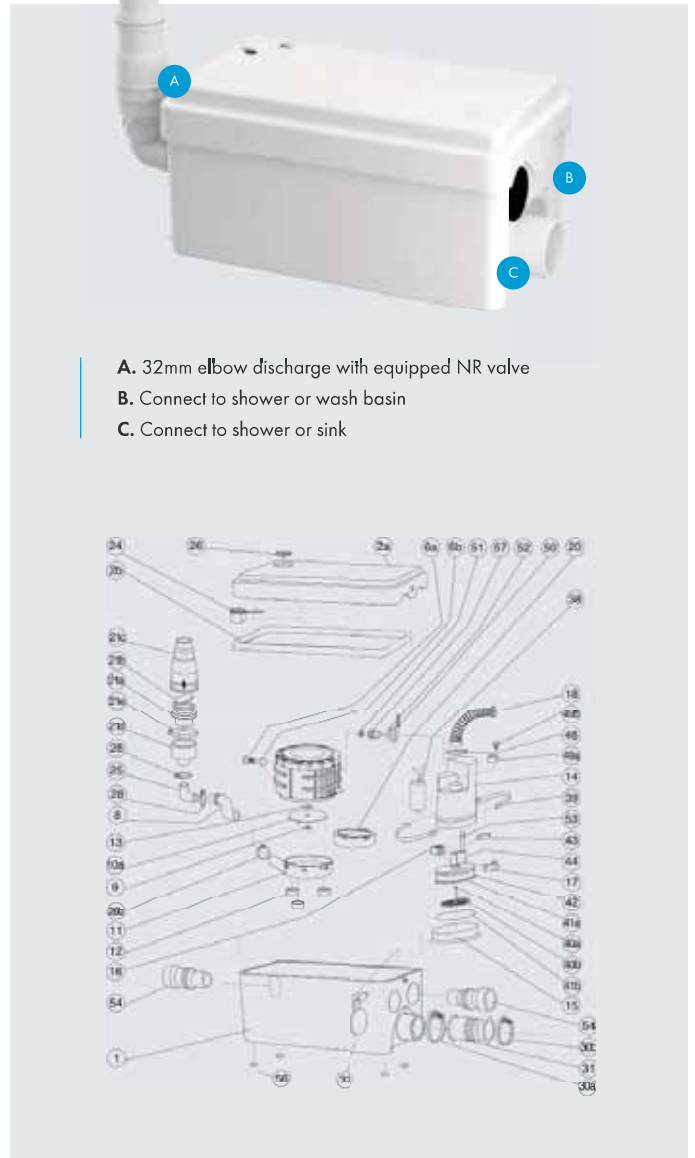
**Discharge pipe diameter:** 22-32mm

**Power/Electrical Information:** 220–240V / 50Hz / 250W  
2.2A/ IP44

**Normal operating temperature:** 35 °C



↑ 4m → 40m



- A. 32mm elbow discharge with equipped NR valve
- B. Connect to shower or wash basin
- C. Connect to shower or sink

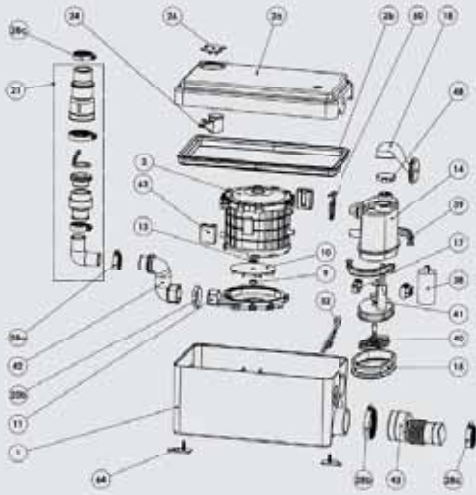


*\*Image shown with exposed pipes for illustrative purposes only*

# SANISHOWER® FLAT



- A. 32mm elbow discharge with equipped NR valve
- B. Connect to wash basin
- C. Connect to shower gully supplied



**IDEAL FOR:** The installation of a new low-level shower

The Sanishower Flat allows the addition of a low-level shower tray and basin.

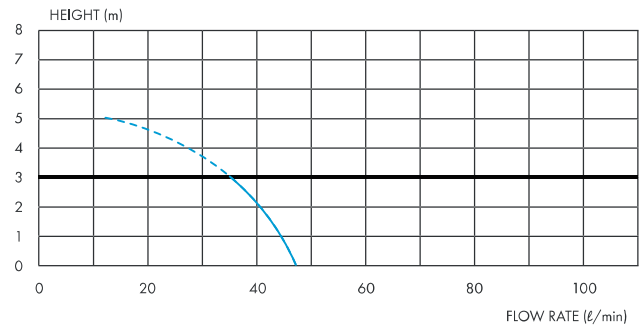
**Size:** L 296mm x H 145mm x W 165mm

**Weight:** 3.5kg

**Discharge pipe diameter:** 22-32mm

**Power/Electrical Information:** 220-240V / 50Hz / 250W  
2.2A/ IP44

**Normal operating temperature:** 35 °C



↑ 3m → 30m



\*Image shown with exposed pipes for illustrative purposes only

## IDEAL FOR: The installation of a walk-in shower

The Sanifloor is used for floor-level drainage (the drain point is level with the floor). A water sensor is integrated into the gully, activating the pump which then sucks the water from the gully.

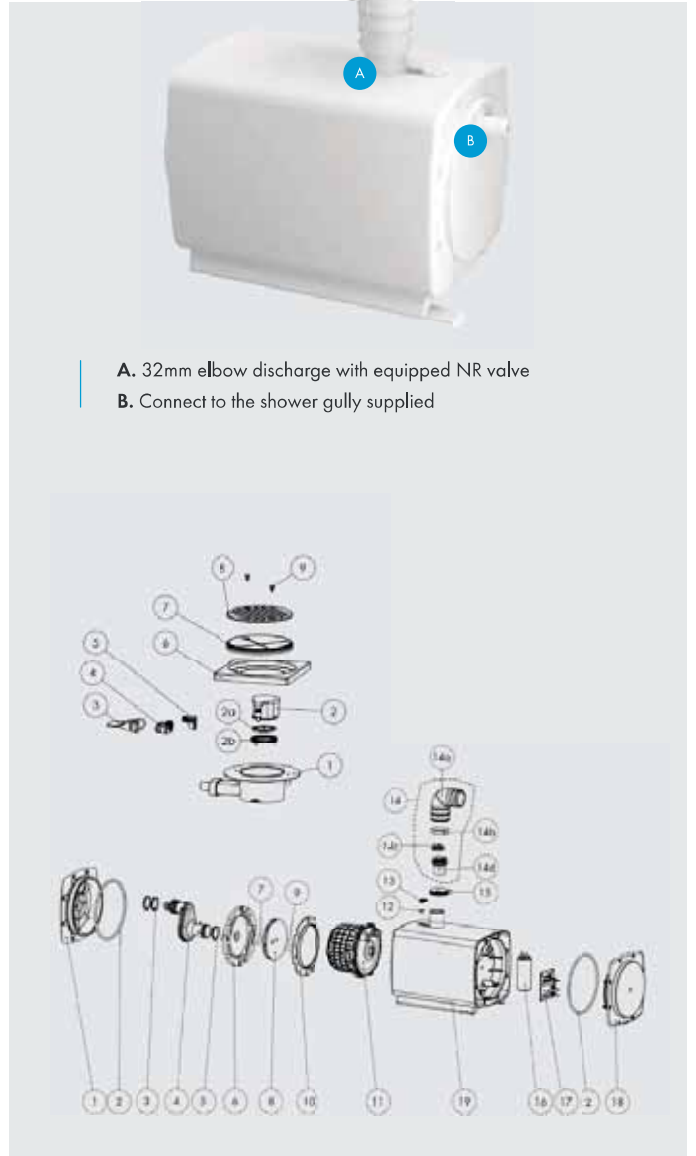
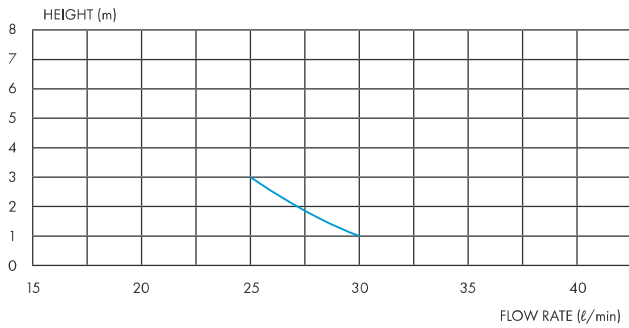
**Size:** L 296mm x H 191mm x W 165mm

**Weight:** 3.5kg

**Discharge pipe diameter:** 32mm

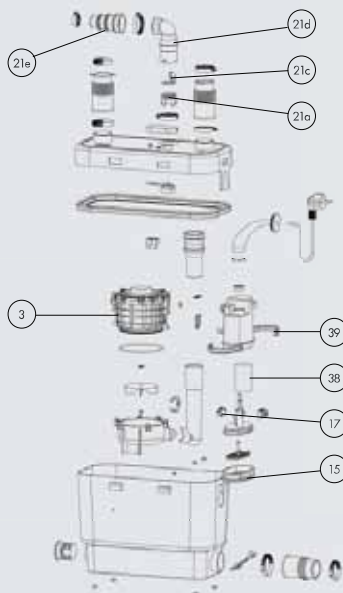
**Power/Electrical Information:** 220–240V / 50Hz / 250W  
1.7A / IP44

**Normal operating temperature:** 35 °C





- A. 32-40mm elbow discharge with equipped NR valve
- B. Vent
- C. Connect to shower, bathtub, wash basin, dishwasher or washing machine



## IDEAL FOR: The installation of a new laundry or utility room

The Sanivite has four inlets, enabling the connection of multiple sinks and/or a washing machine/dishwasher.

**Size:** L 373mm x H 275mm x W 185mm

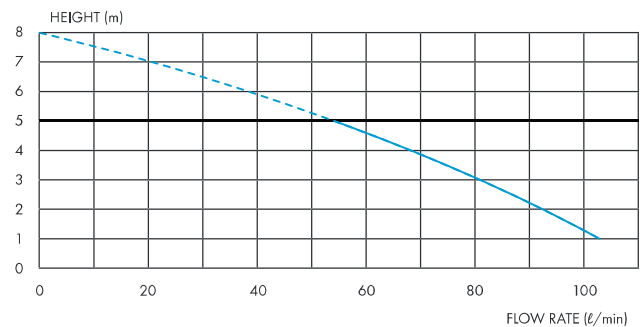
**Weight:** 6kg

**Discharge pipe diameter:** 32mm to 40mm

**Power/Electrical Information:** 220–240V / 50Hz / 400W  
2.2A / IP44

**Normal operating temperature:** 60 °C (Intermittent)

Can be equipped with SANIALARM®



↑ 5m → 50m





**IDEAL FOR:** The installation of a residential or small commercial utility space.

The Sanispeed handles waste water produced by small commercial or residential washing machines, glass/dishwashers, sinks or coffee stations.

**Size:** L 373mm x H 275mm x W 185mm

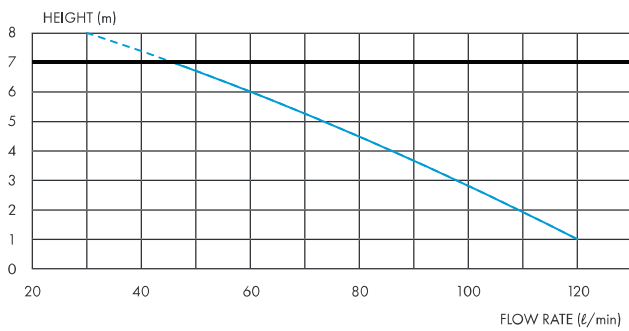
**Weight:** 6.4kg

**Discharge pipe diameter:** 32mm to 40mm

**Power/Electrical Information:** 220–240V / 50Hz / 400W  
2.2A/ IP44

**Normal operating temperature:** 75 °C (Intermittent)

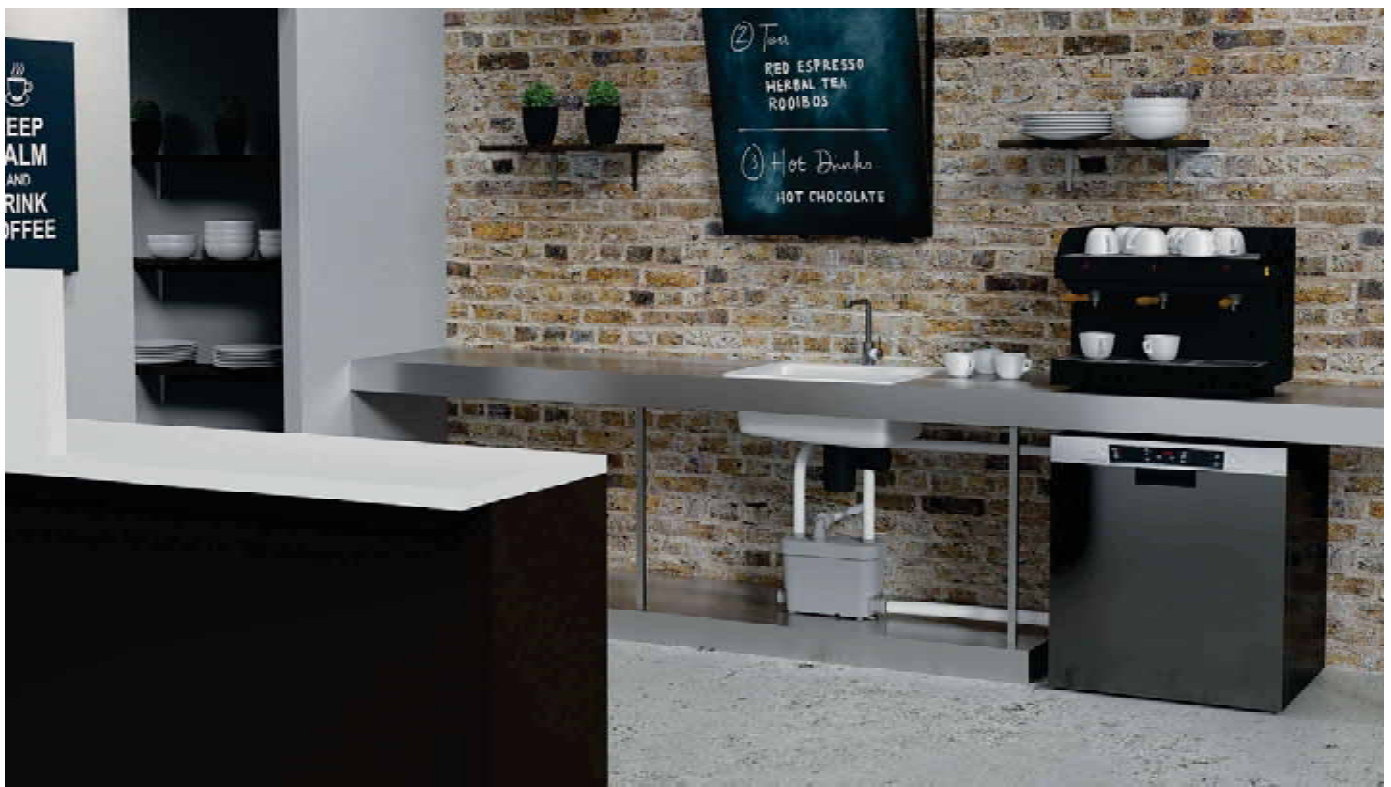
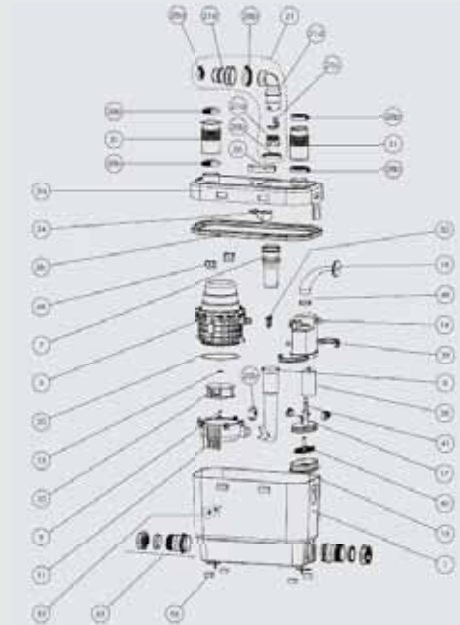
Can be equipped with SANIALARM®



↑ 7m → 70m

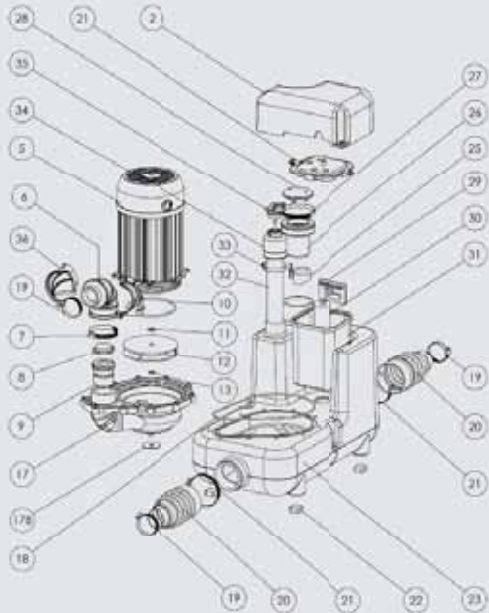


- A. 32-40mm elbow discharge with equipped NR valve
- B. Vent
- C. Connect to shower, bathtub, wash basin, dishwasher or washing machine





- A. 32mm elbow discharge with equipped NR valve
- B. Vent
- C. Connect to shower, bathtub, wash basin, dishwasher or washing machine



## IDEAL FOR: A greywater solution for a larger commercial space

The Sanicom 1 is a lifting station, and can accommodate numerous fixtures including commercial washing machines, dishwashers and sinks.

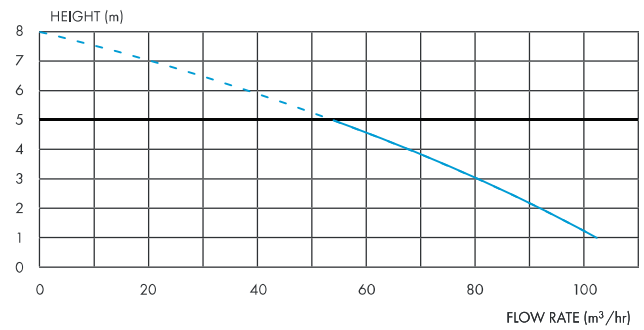
**Size:** L 419mm x H 331.7mm x W 232mm

**Weight:** 10kg

**Discharge pipe diameter:** 32mm

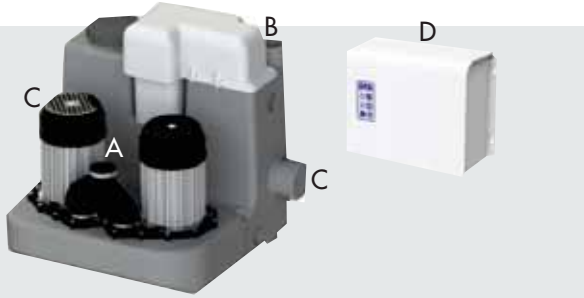
**Power/Electrical Information:** 220–240V / 50Hz / 750W  
6.0A / IP44

**Normal operating temperature:** 90 °C (Intermittent)

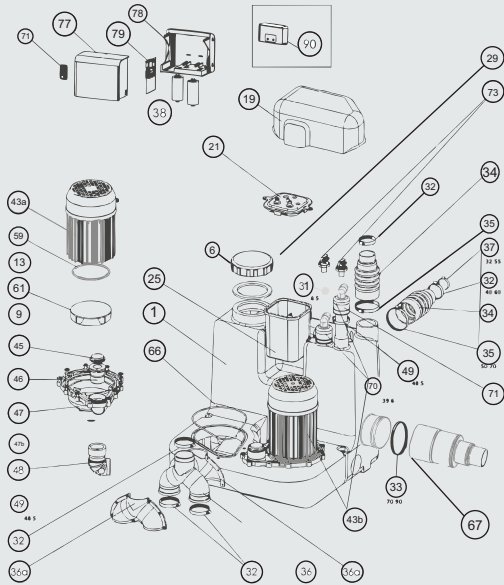


↑ 8m → 80m





- A. 50mm discharge with equipped NR valve
- B. 50mm open vent
- C. Inlet pipe 50/65/80mm
- D. Control Box



**IDEAL FOR:** Greywater from bathroom (without toilet), kitchen, laundry

Sanicom<sup>®</sup> 2 is a high performance commercial grey water lifting station featuring 2 powerful motors, ensuring continuity of service for your business. The easy access service design makes it ideal for busy commercial kitchens & cafe's.

**Size:** L 582mm x H 486mm x W 529mm

**Weight:** 23,6 kg

**Discharge pipe diameter:** Dn50 (Ø ext. 50 mm)

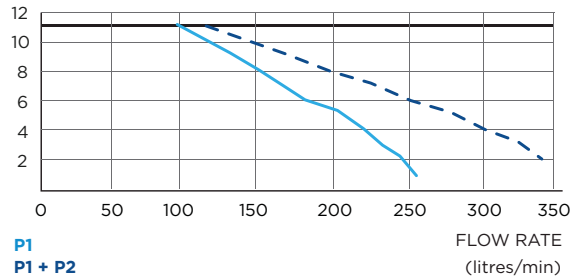
**Power/Electrical Information:** 220-240V/50Hz

Ip44 / Motors 2 X 1500W / 13A

**Normal operating temperature:** 35°C - 90°C



Discharge height (m)



P1

P1 + P2

↑ 11M → 110M





## FULL HOUSE & COMMERCIAL BUILDINGS



**SANICUBIC<sup>®</sup> 1**



**SANICUBIC<sup>®</sup> 2 Classic**



**SANICUBIC<sup>®</sup> 2 XL**

# SANICUBIC® 1

**IDEAL FOR:** Handling waste water from an entire house or small business

This powerful lifting station facilitates up to five toilets, as well as multiple greywater fixtures to one discharge point.

**Size:** L 570mm x H 440mm x W 426mm

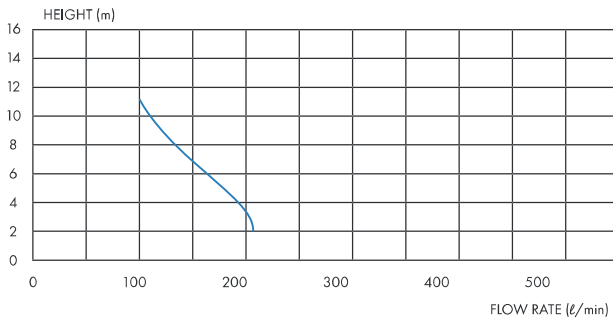
**Weight & Volume:** 16kg / 32ℓ

**Discharge pipe diameter:** 50mm

**Power/Electrical Information:** 220–240V / 50Hz / 1500W  
9A / IP68

**Normal operating temperature:** 70 °C

Equipped with a visual and audible external alarm box



↑ 11m → 110m

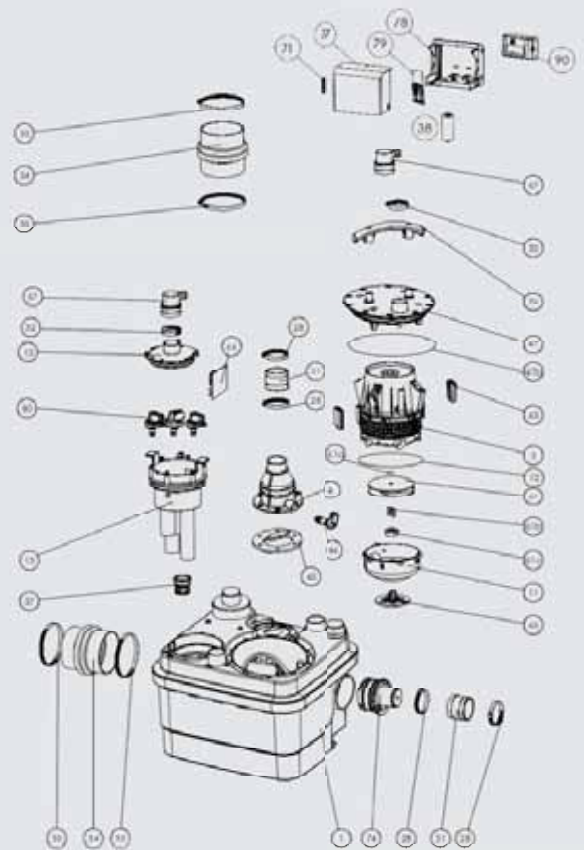
P1

## BENEFITS OF THE SANICUBIC® 1

1. Sanicubic 1 can handle up to 180ℓ per minute from several fixtures
2. Powerful motor for absolute reliability and efficiency
3. Wired audible and visual LED alarm included with the system
4. Easy above-floor installation
5. Mostly accepts accidental flushing of sanitary items
6. IP68 rated enclosure for possible submergence



- A. 50mm elbow discharge with equipped NR valve
- B. Connect to 50mm open venting pipe
- C. Connect to toilet, wash basin, shower, bathtub, washing machine etc.



**SANICUBIC® 1 is equipped with a visual and audible external alarm box (5m long wire).**





**1. CONTROL PANEL**

External wired control panel with LED power control and overload indicator

**2. MOTOR**

A powerful 1500W grinder pump

**3. INLETS**

**3 inlets:** DN 40/50/100/110mm

**1 inlet:** DN 40/50mm (coupling provided)

**4. DISCHARGE**

DN 50mm elbow discharge pipe with equipped NR valve

**5. VENT**

DN 50mm



*Grinding technology mostly eliminates clogging issues caused by sanitary items.*



# SANICUBIC® 2 Classic

**IDEAL FOR:** Handling waste water from an entire house or business

The Sanicubic 2 is a 1 HP heavy-duty duplex grinder system used to pump away waste water from several bathrooms and fixtures from an entire building structure.

**Size:** L 688mm x H 440mm x W 515mm

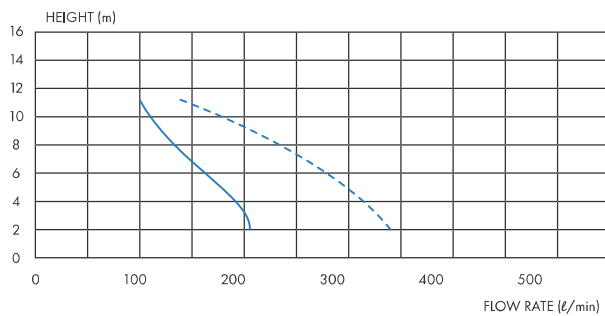
**Weight & Volume:** 30kg / 45ℓ

**Discharge pipe diameter:** 50mm

**Power/Electrical Information:** 220–240V / 50Hz / 2 x 1500W 6A (1 x motor running) / IP68

**Normal operating temperature:** 70 °C

Equipped with a visual and audible external alarm box



↑ 11m → 110m

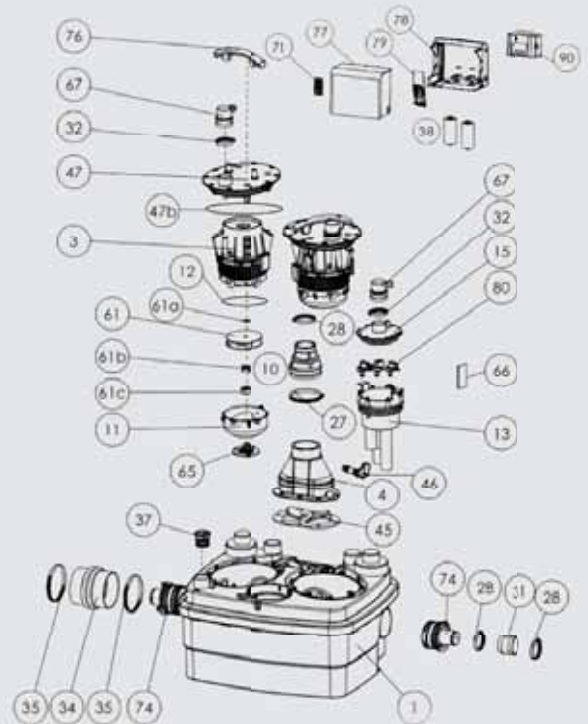
P1 | P1 + P2

## BENEFITS OF THE SANICUBIC®2

1. Sanicubic 2 can handle up to 12m<sup>3</sup>/h from several fixtures
2. Dual motor for absolute reliability and efficiency
3. Wired audible and visual LED alarm included with the system
4. Easy above-floor installation
5. Mostly accepts accidental flushing of sanitary items
6. IP68 rated enclosure for possible submergence



- A. 50mm elbow discharge with equipped NR valve
- B. Connect to 50mm open venting pipe
- C. Connect to toilet, wash basin, shower, bathtub, washing machine etc.



**SANICUBIC® 2 Classic is equipped with a visual and audible external alarm box (5m long wire).**

The dual-motor technology can be used not only for demanding situations (vs Sanicubic1), but also if back-up is required. For example, if one motor jams (e.g. bone or metal accidentally flushed), the second one will still operate, allowing for no loss of functionality while the first motor is being fixed.



*Grinding technology mostly eliminates clogging issues caused by sanitary items.*

#### 1. CONTROL PANEL

External wired control panel with LED power control and overload indicator

#### 2. MOTOR

Two powerful grinder pumps of 1500W each

#### 3. INLETS (Up to 5 inlets)

4 inlets: DN 40 / 50 / 100/ 110mm

1 inlet: DN 40 / 50mm (coupling provided)

#### 4. DISCHARGE

DN 50mm elbow discharge pipe with equipped

NR valve

#### 5. VENT

DN 50mm



# SANICUBIC® 2 XL

## IDEAL FOR: Handling water from an industrial facility

Being one of the largest macerator lifting stations, the Sanicubic 2 XL can handle up to 40m<sup>3</sup> of waste water per hour.

**Size:** L 913mm x H 799mm x W 713mm

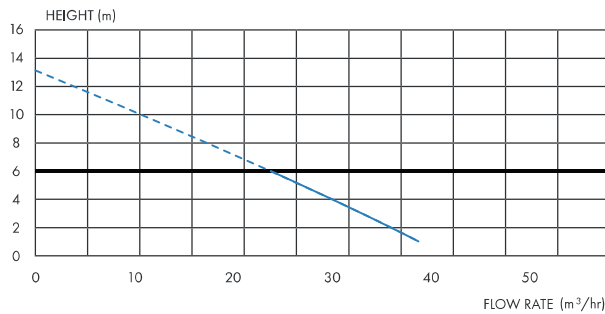
**Weight & Volume:** 55kg / 120ℓ

**Discharge pipe diameter:** 80mm = 10m vertical,  
110mm = 6m vertical

**Power/Electrical Information:** 220–240V / 50Hz / 2000W x 2  
8A (1 x motor running) / IP68

**Normal operating temperature:** 70 °C

Equipped with a visual and audible external alarm box



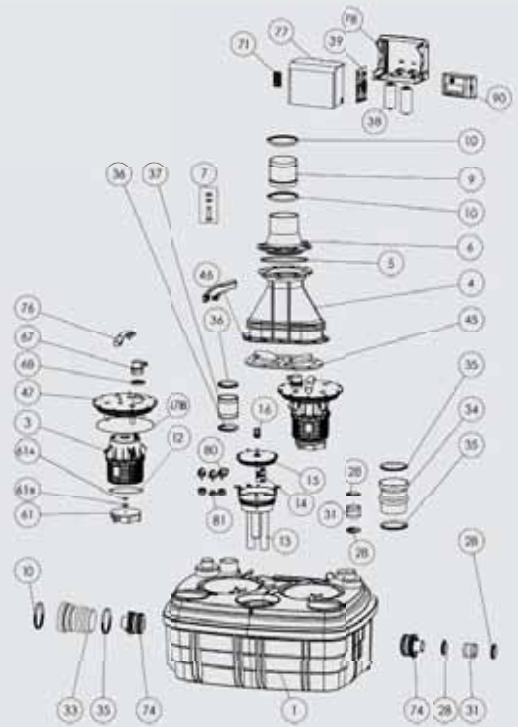
↑ 10m → 100m

## BENEFITS OF THE SANICUBIC® 2 XL

1. Ideal for large-volume commercial situations
2. Large 120ℓ tank volume
3. Two alarms for ultimate safety – both hard-wired
4. Easy above-floor installation
5. Volt-free contact for connection to a Building Management System



- A. 80/110mm elbow discharge with two integrated NR valves
- B. Connect to 75mm open venting pipe
- C. Connect to toilet, wash basin, shower, bathtub, washing machine etc.



**SANICUBIC® 2 XL is equipped with a visual and audible external alarm box (5m long wire).**





*New Vortex dilacerating technology.*



#### 1. CONTROL PANEL

External-wired control panel with LED power control and overload indicator

#### 2. MOTOR

Two powerful vortex pumps of 2000W each

#### 3. INLETS (Up to 5 inlets)

4 inlets: DN 40/50/100/110mm

1 inlet: DN 40/50mm

1 additional DN 125mm connector (coupling provided)

#### 4. DISCHARGE

DN 80/100mm elbow discharge pipe with equipped NR valve

#### 5. VENT

DN 75mm





# UNDERGROUND PUMP STATION



**SANIFOS<sup>®</sup> 110**



**SANIFOS<sup>®</sup> 280**



**SANIFOS<sup>®</sup> 610**



**SANIPUMP<sup>®</sup>**

# SANIFOS® 110

**IDEAL FOR:** A house where the drainage is too low for the sewer and a surface-mounted pump is not an option

The Sanifos 110 is an underground pump station that handles waste water from an entire house. The 110ℓ tank is pre-mounted with an integrated cutter pump system and fittings.

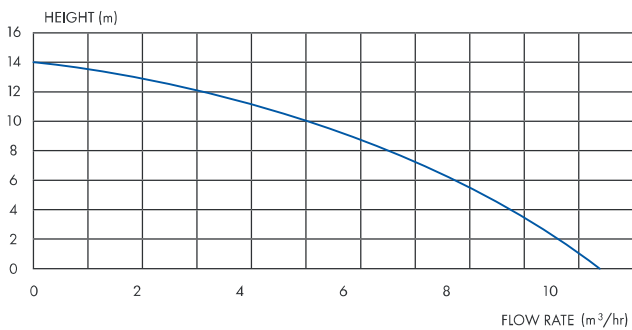
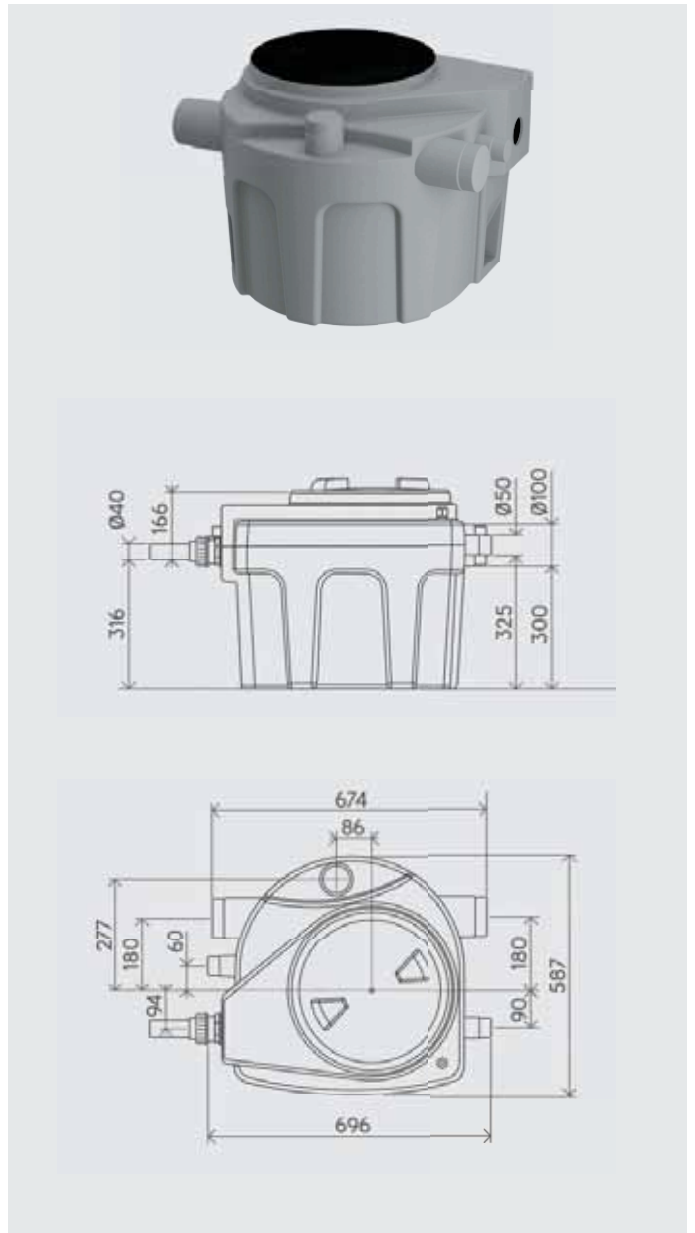
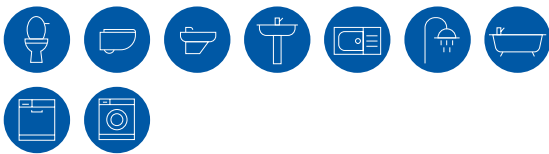
**Size:** L 696mm x H 482mm x Diameter 587mm

**Weight:** 23kg

**Discharge pipe diameter:** 40mm

**Power/Electrical Information:** 220-240V / 50-60Hz / 1500W  
6A / IP68

**Normal operating temperature:** 70 °C



↑ 11m → 110m





# SANIFOS® 280

## IDEAL FOR:

An automatic lifting station that can be used for pumping residential or industrial waste water when the sewer is at too high level for natural gravity drainage

The Sanifos 280 has a 280 litre storage tank with a float switch and offers easy handling for installation below ground level. The Sanifos 280 has three drilling zones to allow access to the tank where you need it for your project and it discharges through a 50 mm pipework.

Size: 1023mm x 760mm

Weight: 38kg

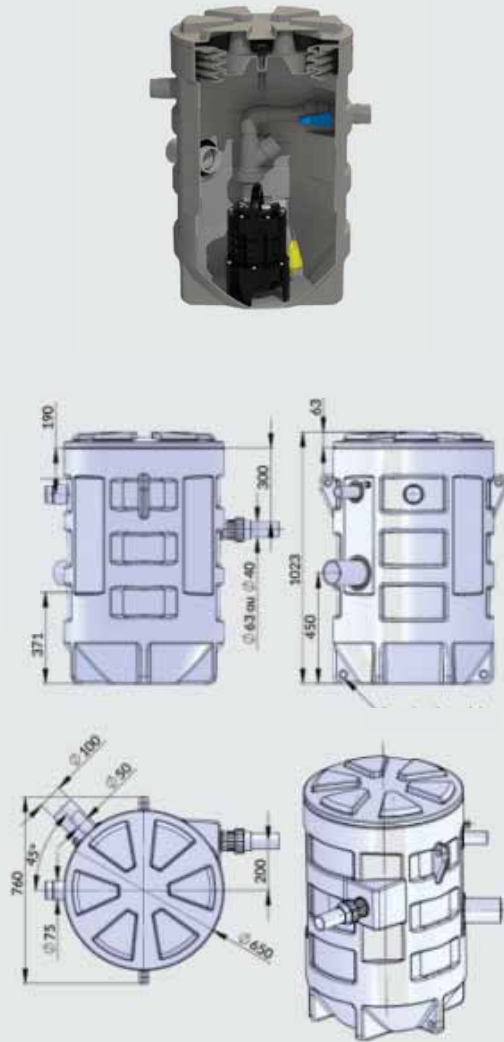
Discharge pipe diameter: 50mm

Power/Electrical Information: 220-240V / 50Hz / 1500W / 6A / IP68

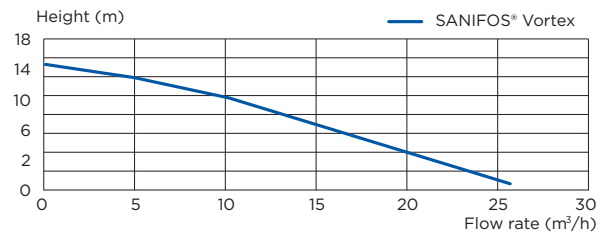
Inlets: 6 inlets Ø ext. 50/40/100/110/125

Working Temperature: 70°C for short periods

Equipped with: Sanifos 250 HF Alarm/ check valve with ball NRV



**New Vortex dilacerating technology.**



↑ 11m → 110m

Sanifos 280 (vortex)



# SANIFOS® 610

## IDEAL FOR:

A single or dual motor lifting station that can be used for pumping residential or industrial waste water when the sewer is at too high level for natural gravity drainage.

**SANIFOS® 610 is an automatic lifting station for residential or industrial waste. It can take waste from a toilet, basin, bath, shower, bidet, washing machine, dishwasher and sink.**

**Size:** 1140mm x 1000mm

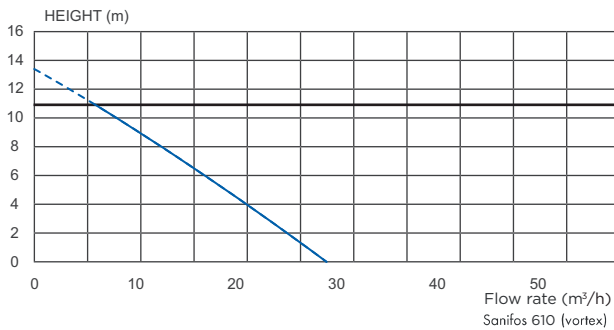
**Weight:** 1 pump: 68 kg / 2 pumps: 88 kg

**Discharge pipe diameter:** 50mm

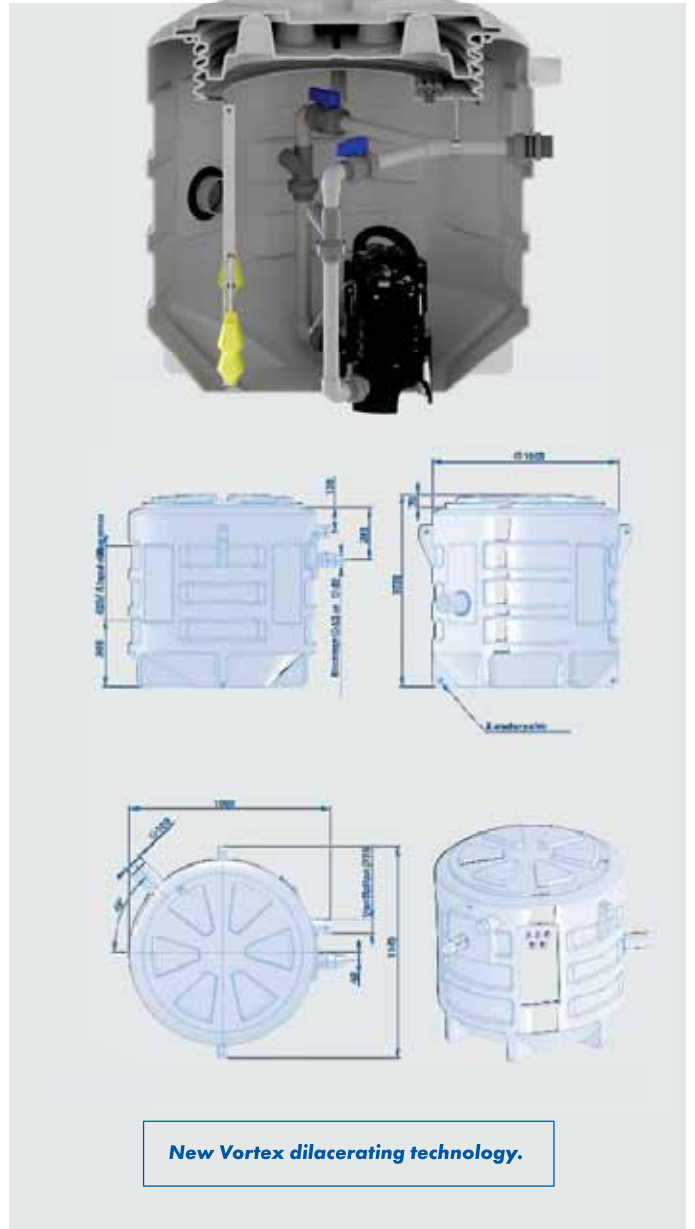
**Inlets:** 6 inlets Ø ext. 50/40/100/110/125

**Power/Electrical Information:** 220-240V / 50Hz / 2 x 1500W  
6A(1 x motor running) / IP68

**Normal operating temperature:** 70 °C



↑ 12m → 120m







**IDEAL FOR:** The handling of waste water from an underground pit or tank

A submersible pump with macerator blades for use in domestic or commercial applications.

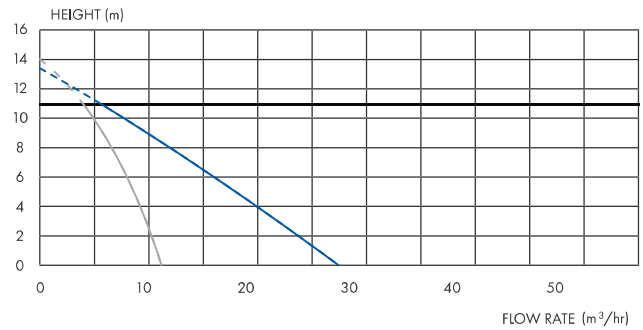
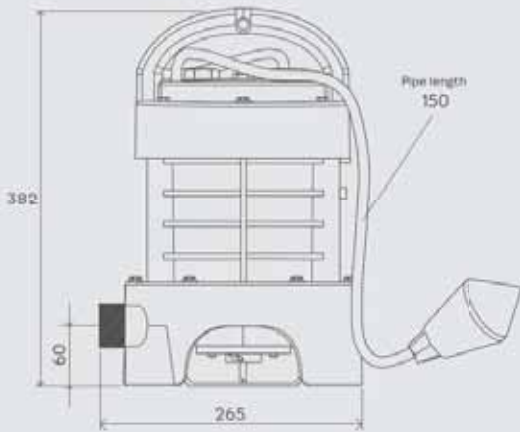
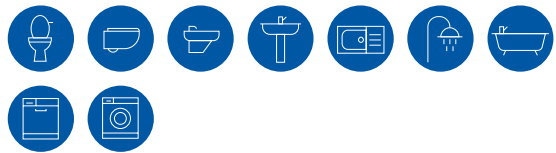
**Size:** L 265mm x H 382mm

**Weight:** 13kg

**Discharge pipe diameter:** 40mm

**Power/Electrical Information:** 220-240V / 50-60Hz / 1500W  
6A / IP68

**Normal operating temperature:** 70 °C



↑ 11m → 110m

Sanipump (bladed)

Sanipump (vortex)



# SUBMERSIBLE PUMPS



**SANISUB**® ZPK



**SANISUB**® 400



**UFB**® 200/30 & 40



**SANIPUMP**® SLD 700 SA



**SANIPUDDLE**® FSP



**SANISUB**® STEEL  
AND EMERGENCY KIT

# SANISUB® ZPK

**IDEAL FOR:** Residential/Industrial/  
Agricultural

**Sanisub ZPK 40A has an automatic release triggered by adjustable float. Can handle water up to an average temperature of 90°C over a short period**

**Size:** 212mm x 342mm

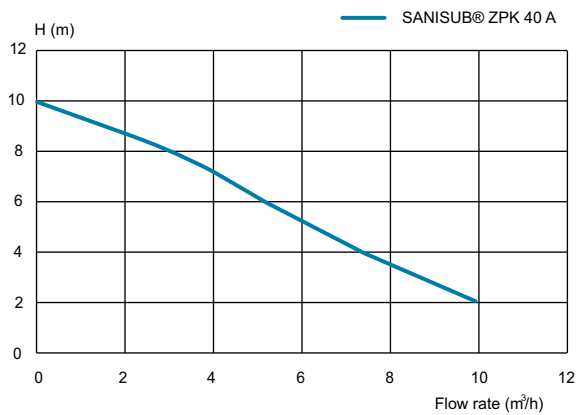
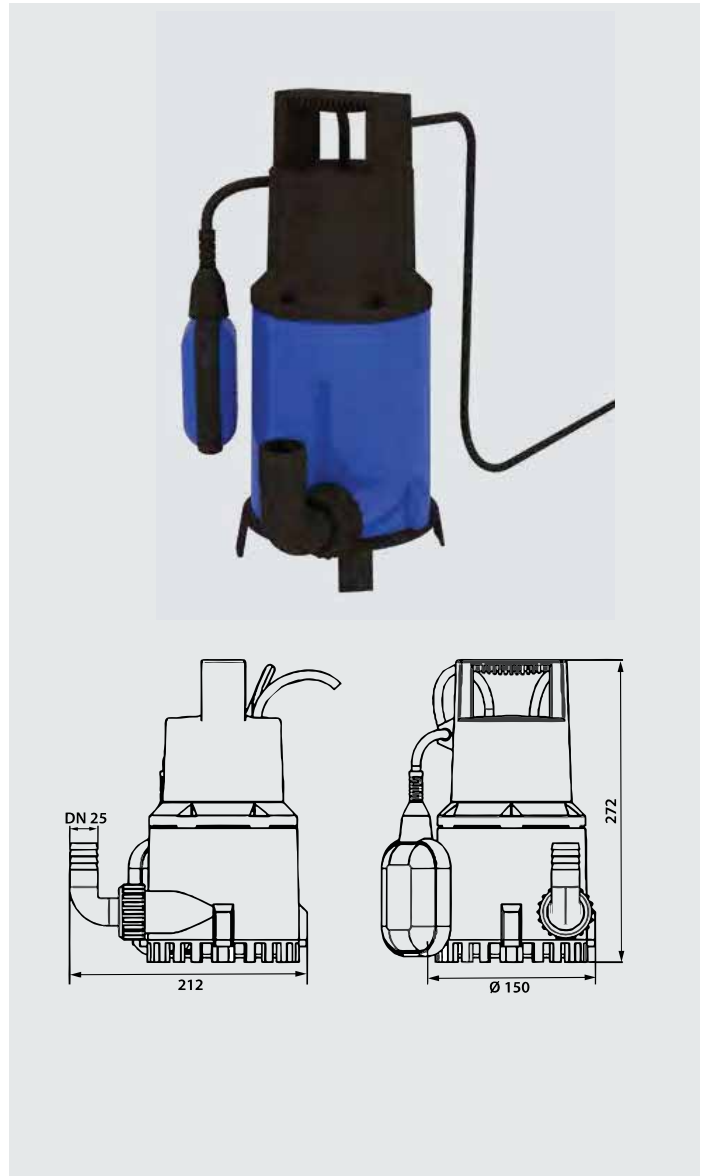
**Weight:** 6.5kg

**Discharge pipe diameter:** 32mm

**Power/Electrical Information:** 220-240 V/50-60 Hz/ 3.7A IP68 / 850W

**Normal operating temperature:** 90°C

**Free passage:** 30mm Particle size



↑ 10m





# SANISUB® 400

## IDEAL FOR:

**Automatic release Portable Submersible pump Integrated non return valve Pump for basements, sumps or for flood water**

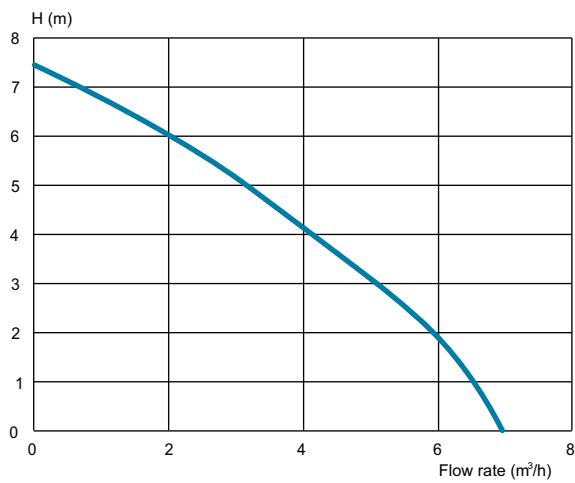
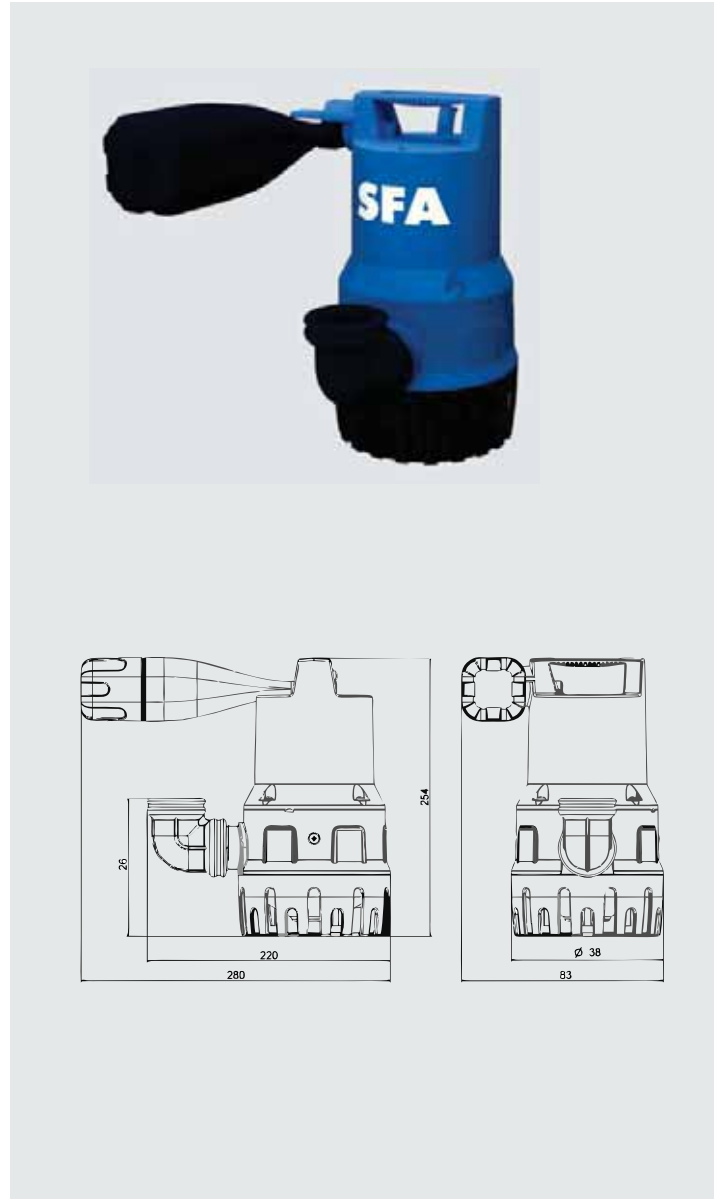
**Size:** 183mm x 254mm

**Weight:** 4.1kg

**Discharge pipe diameter:** 32mm

**Power/Electrical Information:** 220-240 V/50-60 Hz /1.4A/ IP68 / 400W

**Free passage:** 10mm Particle size



↑ 7.5m





# UFB 200/30 & 40

## IDEAL FOR:

**Pumping of domestic waste water from washing machines, Showers, washbasins etc.**

**Size UFB 200/30:** 460mm x 350mm x 432mm

**Size UFB 200/40:** 460mm x 350mm x 432mm (Adjustable)

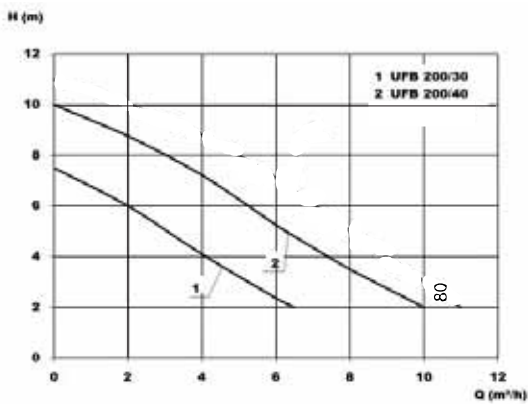
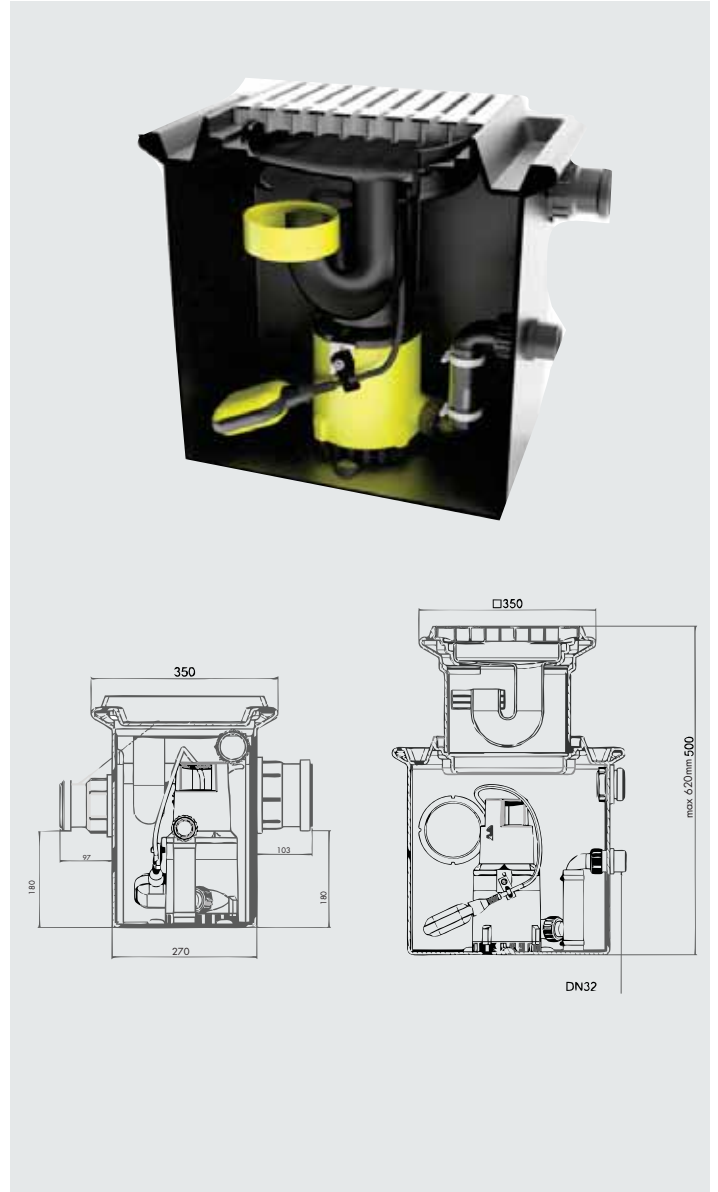
**Weight:** UFB 200/30: 6.1kg | **Weight:** UFB 200/40: 8kg

**Discharge pipe diameter:** 32mm

**Power/Electrical Information:** 220-240 V/50-60 Hz/ IP68

**UFB 200/30:** 1.8A / 350W Motor | **UFB 200/40:** 3.5A / 650W Motor

**Normal operating temperature:** 40°C (short-term 90°C)



UFB 200/30



7.5m

UFB 200/40



10m



# SANIPUMP<sup>®</sup>SLD 700 SA

## IDEAL FOR:

**Pumping for all types of Sewage and rainwater It can be installed in concrete manholes or pits**

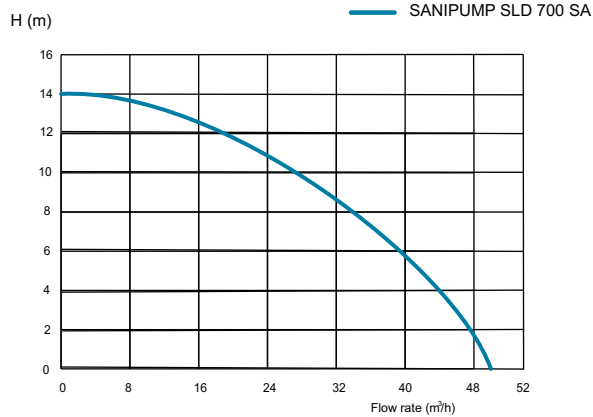
**Size:** 355mm x 240mm x 514mm

**Weight:** 32.8kg

**Discharge pipe diameter:** 40mm

**Power/Electrical Information:** 220-240 V/50-60 Hz/ 9.2A IP68 / 1100W Motor

**Free passage:** 50mm Particle size



↑ 14 m



# SANIPUDDLE<sup>®</sup> FSP

## IDEAL FOR:

Portable pump for pumping puddles. For cellars, laundry, swimming pools, ponds, garages etc.

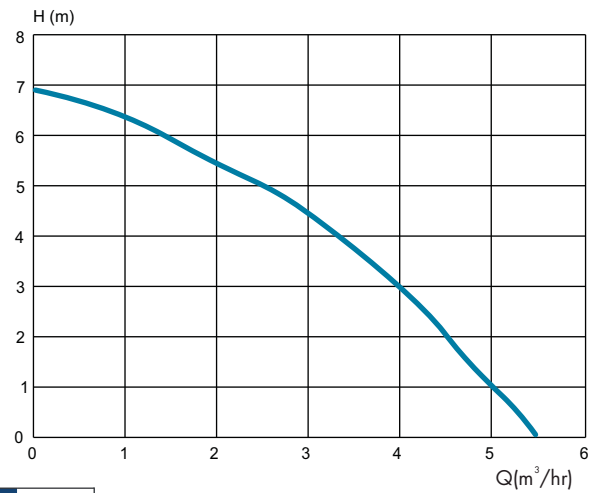
Size: 250mm x 150mm

Weight: 3.77 kg

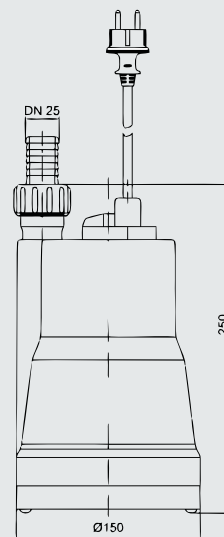
Discharge pipe diameter: 25mm

Power/Electrical Information: 220-240 V/50-60 Hz/ 1.3A/ IP68 / 300W Motor

Free passage: 1mm Particle size & leaves only 1mm water



↑ 7m



# SANISUB<sup>®</sup> STEEL AND EMERGENCY KIT

**IDEAL FOR:** Residential/Industrial/Agricultural

**For wastewater with a minimum particle size of 10mm.  
Complete with basket, hose and pump.**

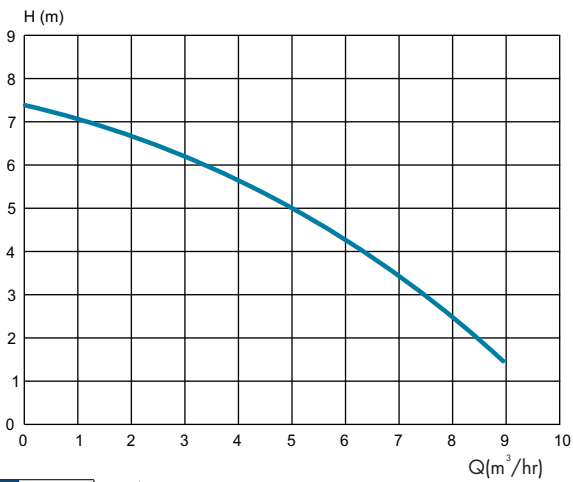
Size: 276 mm x 233mm x 168mm

Weight: 13kg

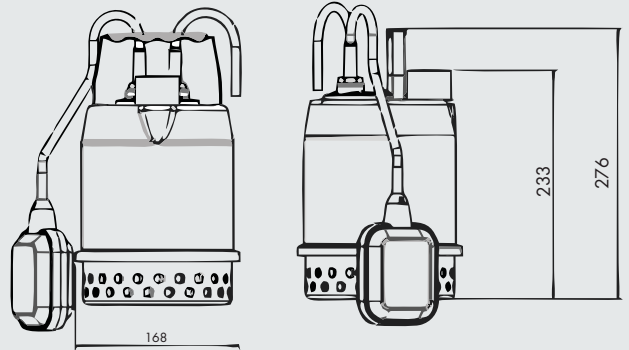
Discharge pipe diameter: 32mm

Power/Electrical Information: 220-240 V/50-60 Hz/ 2A /IP68  
/ 450W Motor

Normal operating temperature: 35°C Max 80°C (short Period)



↑ 7.5m



Also available without emergency kit







## CONDENSATE PUMPS



**SANICONDENS<sup>®</sup> Pro**



**SANICONDENS<sup>®</sup> clim Mini**



**SANICONDENS<sup>®</sup> clim Pack**



**SANICONDENS<sup>®</sup> clim Deco**

# SANICONDENS<sup>®</sup> Pro

**IDEAL FOR:** Commercial refrigeration systems, air conditioners and de-humidifiers.

The Sanicondens Pro pumps condensate away from the refrigerated display or large air conditioners.

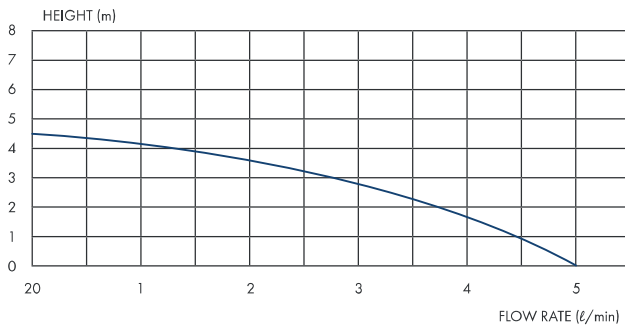
**Size:** L 242mm x H 169mm x W 143mm

**Weight:** 2kg

**Discharge pipe diameter:** 8mm/11mm

**Power/Electrical Information:** 220–240V / 50Hz / 60W  
0.52A / IP20

**Normal operating temperature:** 80 °C



↑ 4.5m



# SANICONDENS® *clim Mini S*

**IDEAL FOR:** The installation of an air conditioning system

The Sanicondens Clim Mini is specifically designed to handle condensate produced by air conditioning systems.

**Size:** L 104mm x H 49.5mm x W 28mm

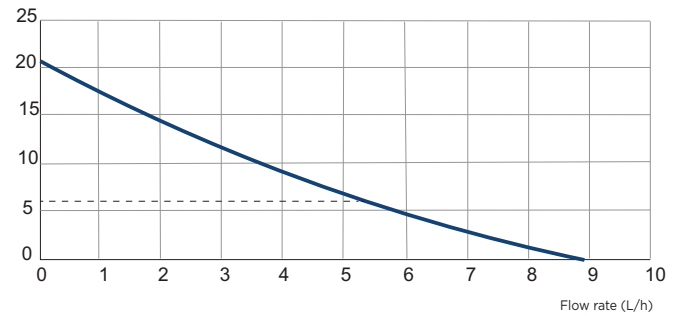
**Weight:** 0.5kg

**Discharge pipe diameter:** 10mm

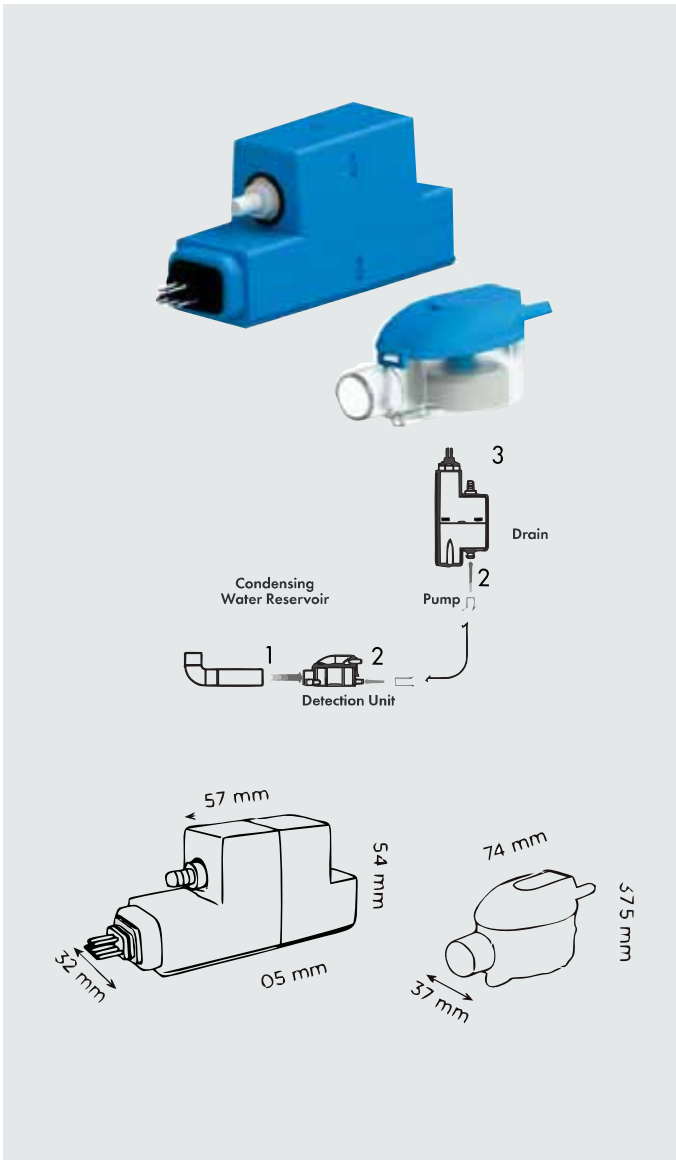
**Power/Electrical Information:** 220–240V / 50Hz / 22W  
0.52A / IP20



Height (m)



↑ 6m



# SANICONDENS® *Glim Pack*

**IDEAL FOR:** The installation of an air conditioning system

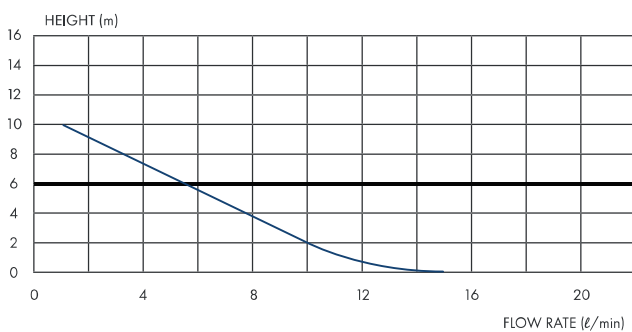
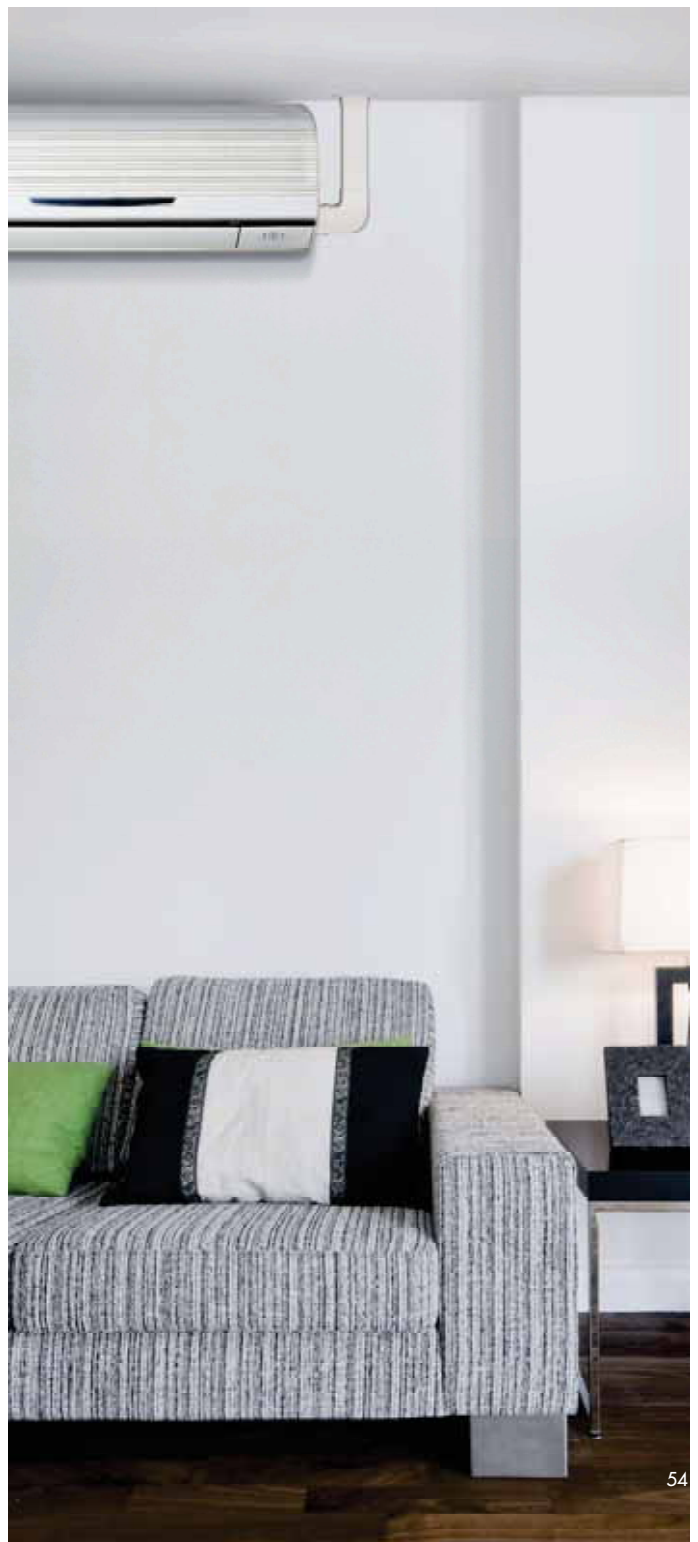
A Sanicondens Clim Mini is incorporated into the Clim Pack, specifically designed for split units, which comes with trimmable plastic trunking for a perfect finish.

**Size:** Minimum – L 127mm x H 360mm x W 62mm  
Maximum – L 127mm x H 860mm x W 62mm

**Weight:** 1.3kg

**Discharge pipe diameter:** 10mm

**Power/Electrical Information:** 220–240V / 50Hz / 22W  
0.52A / IP20



↑ 6m



# SANICONDENS® *clim Deco*



**IDEAL FOR:** The installation of air conditioning systems and refrigeration units

This easy-to-install unit disposes of condensate produced by commercial air conditioning systems and refrigeration units.

**Size:** L 45mm x H 115mm x W 57,5mm

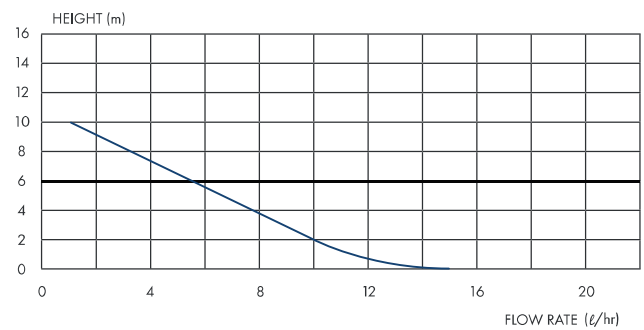
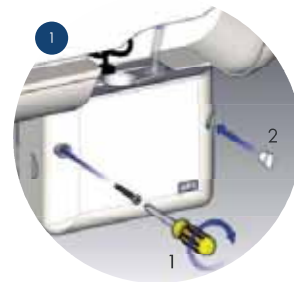
**Weight:** 0.4kg

**Discharge pipe diameter:** 8-10mm

**Power/Electrical Information:** 220-240V / 50Hz / 25W  
0.52A / IP24

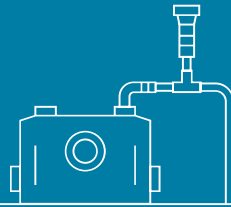


## Installation



↑ 6m

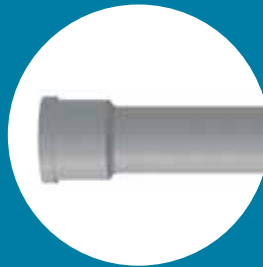




# ACCESSORIES



**SANIALARM**



**EXTENSION PIPE**



**ISOLATING VALVES**



**AIR ADMITTANCE VALVE**



# SANIALARM

Alerts the user to prevent further usage until the unit has been inspected

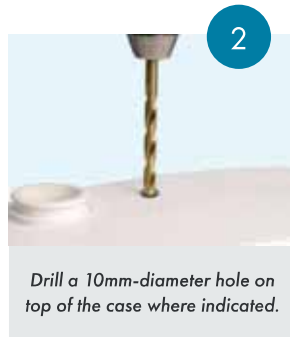
The SaniAlarm has a level pressure switch that triggers an alarm fixed on the top of the unit if the volume of water exceeds the maximum level allowed. The alarm emits a continuous 80 dB warning sound until it is switched off or the problem is rectified. The SaniAlarm is battery operated and can be installed on most Saniflo macerating units and drain-water pumps.



**\*Suitable for use with Saniflo, Sanitop, Sanipro XR, Sanislim, Sanipack, Sanibest Pro, Sanivite and Sanispeed.**



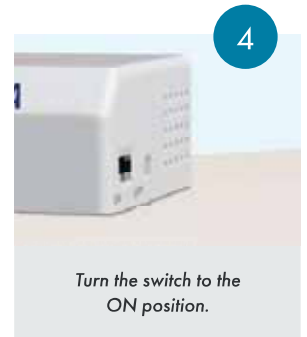
1  
Install two AA batteries (not included).



2  
Drill a 10mm-diameter hole on top of the case where indicated.



3  
Insert the tube and position the SaniAlarm on top.



4  
Turn the switch to the ON position.

## EXTENSION PIPE

SFA Saniflo introduced the Extension Pipe to simplify the installation process and make it easier to hide the pump and plumbing behind any finished wall. This extension pipe is used with the Saniflo, Sanitop, Sanipro, Sanislim, Saniplus, Sanibest Pro and Saniaccess 3 systems.

The 450mm extension pipe was designed with the idea to reduce time when installing the macerating and grinding systems. It has an inner gasket which connects to the rear spigot of the Saniflo toilet without any difficulty. Its sealed connection keeps water from seeping out once the toilet is flushed.

The ease of installation is the reason why installers recommend the extension pipe for any Saniflo installation. When using the extension pipe, the toilet bowl should be raised 10mm for additional gravity flow toward the macerating or grinding system.



**Extension pipe includes paintable decorative trim that surrounds the pipe and provides a perfect finish.**



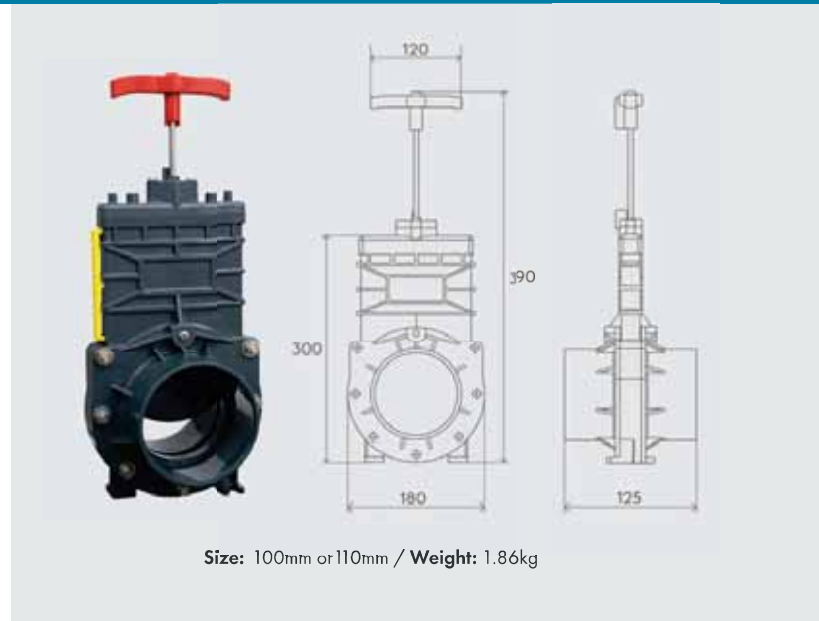


# ISOLATING VALVES

Designed for use with the Sanicubic range, isolating valves allow you to carry out maintenance on lifting stations easily, quickly and without restrictions.

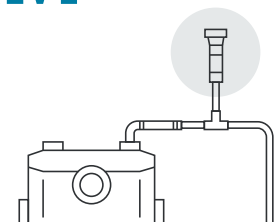
## WHY CHOOSE THIS PRODUCT?

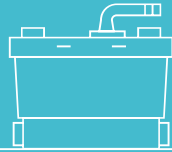
1. Allows convenient maintenance
2. Designed specifically for use with the Sanicubic range



## AIR ADMITTANCE VALVE

Where the pipework goes to a floor lower, fit an air admittance valve at the highest point capable of withstanding 10psi pressure, or increase pipe size coming down to 'break' syphon.





# CASE STUDIES



**RESIDENTIAL**



**PROFESSIONAL**



**COMMERCIAL**



**INDUSTRIAL**



**MODULAR CONSTRUCTION**

## THE CHALLENGE

Canal Walk, Western Cape

Basins and sinks installed in remote areas at Clicks stores

Clicks' pharmacy and staff kitchen are situated at the back of the store. There is no drain to discharge the waste. To install conventional drainage would require costly excavation work.

## THE SOLUTION

Due to the distance from the main drain, **SANISPEED** has been used to remove all greywater. The unit pumps grey water from a wash basin and double kitchen sink 3.5m vertically and then 15m horizontally to reach the main drain, without major work.



See product on page 31

# PHARMACY



- Traditional Drain
- Saniflo Drain
- Main Outlet Drain



## THE CHALLENGE

Bedfordview, Gauteng

A coffee shop kitchen installed under the escalator shaft.

The drainpipe is located 5m above the site but the coffee shop needs to drain its kitchen sinks and dish/glass washers. Using buckets would have resulted in hygiene issues and increased the chance of staff accidents.

## THE SOLUTION

**SANIVITE**, located behind the installation, collects all waste and lifts it all the way up through the escalator to reach the upper drainage point. Without major work, Saniflo provides a successful solution for a commercial kitchen installation in a most challenging area.



See product on page 30

# COFFEE SHOP CHAIN



- Traditional Drain
- Saniflo Drain
- Main Outlet Drain



# FOOD COURT



## THE CHALLENGE

Howard Centre, Pinelands, Western Cape

An extra sink installed where no drain is available!

The shop needed an extra sink for washing dishes. There was no drain available in the location where the owner needed the sink to be installed.

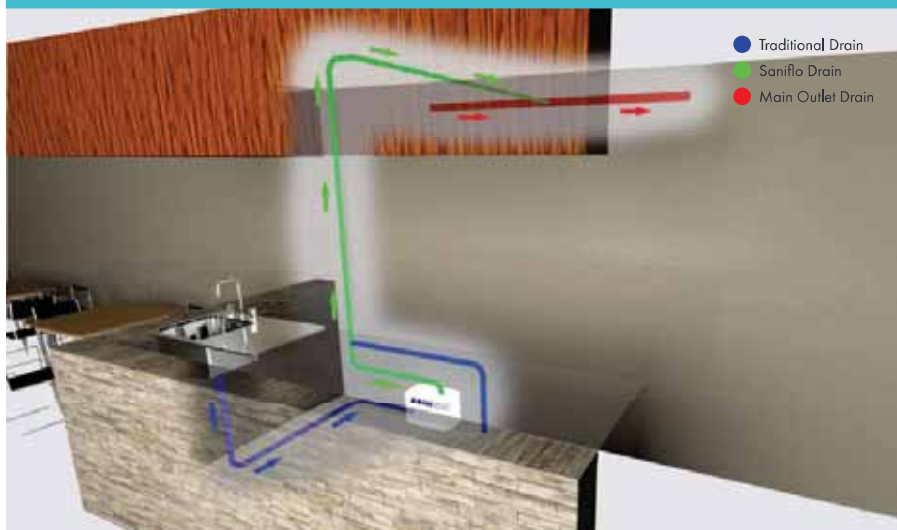
## THE SOLUTION

**SANISHOWER** located in the bottom of the cupboard was the perfect answer to allow for the installation of an extra sink. The unit carries waste water 2.8m up to the ceiling and 10m across a neighbouring shop via a 32mm pipe to reach the main drain.



See product on page 27

# RESTAURANT



## THE CHALLENGE

Promenade Mall, Camps Bay, Western Cape

An extra bar and sinks where there is no drain.

The owner of the restaurant wanted to create a bar area on the opposite side of the kitchen. Unfortunately, no existing drainage point was located in this part of the building.

## THE SOLUTION

**SANIVITE** has been used to allow for the installation of a double kitchen sink. The unit carries all the waste 3.5m up and 15m across through a 32mm pipe to reach the drainage point on the opposite side of the building.



See product on page 30



## THE CHALLENGE

Durban, KwaZulu-Natal

Coffee counter and staff kitchen located far from drain.

The Empire Coffee counter and the staff kitchen are located at the opposite side to the main drain. The facilities manager did not want to disrupt the entire store to do the installation.

## THE SOLUTION

**SANICOM 1** can handle very hot water and the intensive activity that occurs in an industrial kitchen. The unit carries greywater from a double kitchen sink, glass and dishwasher and a wash basin up through the ceiling all the way to the entrance where the main drainage pipe is situated. All achieved without having to break the walls and break up the tiles.



See product on page 32

# CONVENIENCE STORE CHAIN



## THE CHALLENGE

Alberton, Gauteng

Bathrooms in a shopping complex with no sewage line.

The new shopping complex was built in an area with no sewage. Each of the three shops needed its own bathroom and it would have been costly to install a new sewage line.

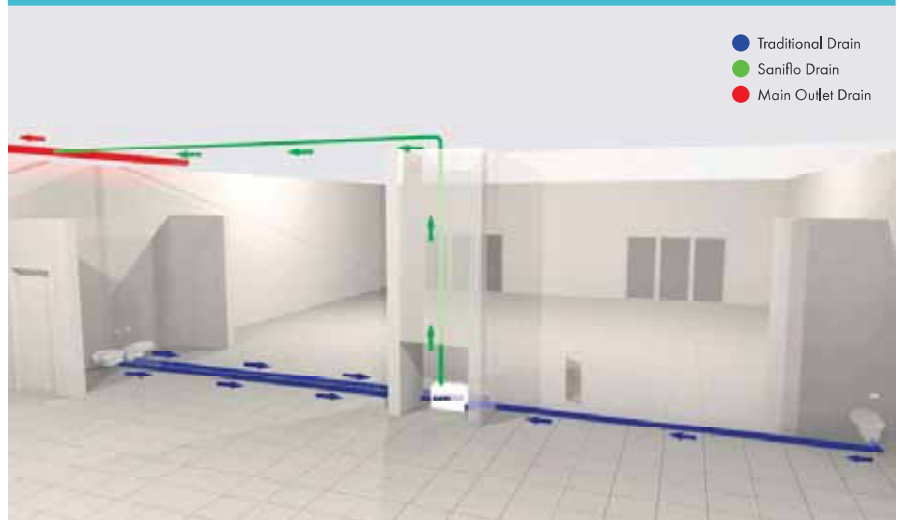
## THE SOLUTION

**SANICUBIC 1** enables the installation of multiple bathrooms. Here the unit removes waste from three toilets and three wash basins through a 50mm discharge pipe, 4m up and 40m across to reach the existing sewer line.



See product on page 35

# SHOPPING COMPLEX



# CITY CENTRE ROOF TOP CLUB



## THE CHALLENGE

Cape Quarter, Cape Town, Western Cape

Commercial kitchen and restrooms installed on a roof top.

Installing a fully equipped commercial kitchen and bathroom on a rooftop involves major work, especially regarding the drainage parameter. In this case, it would have cost an extra R55 000 just to remove the air-conditioner, which is located in the path of the conventional drain.

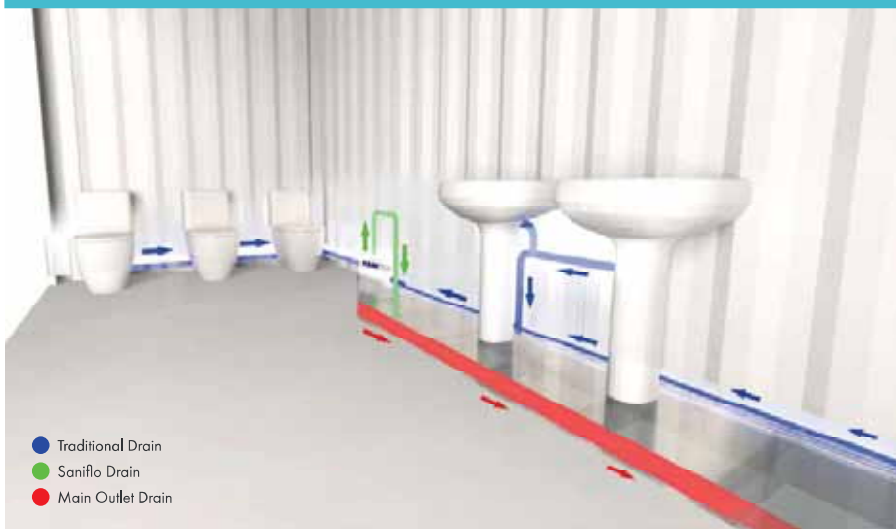
## THE SOLUTION

**SANICUBIC 2 CLASSIC** removes waste from the double kitchen sink, dish and glass washers, two wash basins and two toilets, without major work. The air conditioner remained in position as Sanicubic 2 Classic is discharging 5m horizontally and 6m vertically through a 50mm pipe to reach the upper drainage point. An easy, reliable and cost-effective way to install all amenities where needed.



See product on page 37

# MODULAR CONSTRUCTION



## THE CHALLENGE

Johannesburg, Gauteng

Toilets and wash basins installed in containers!

A sanitation container is designed to offer flexibility, but draining the waste is not that easy. It needs to be located near a septic tank or sewer connection/manhole, thus compromising the unit's flexibility.

## THE SOLUTION

**SANICUBIC 1** has been installed into the Kwikspace sanitation containers to collect and lift all waste. Those containers can now be installed anywhere and moved very easily.



See product on page 35



# PROJECT NOTES



**Contact Us For More Information**







Saniflo  SFA GROUP

Unit 4, 778 Richards Dr, Halfway House, Midrand, JHB  
Tel: +27 (0) 21 286 0028 | Email: info@saniflo.co.za  
[www.saniflo.co.za](http://www.saniflo.co.za)